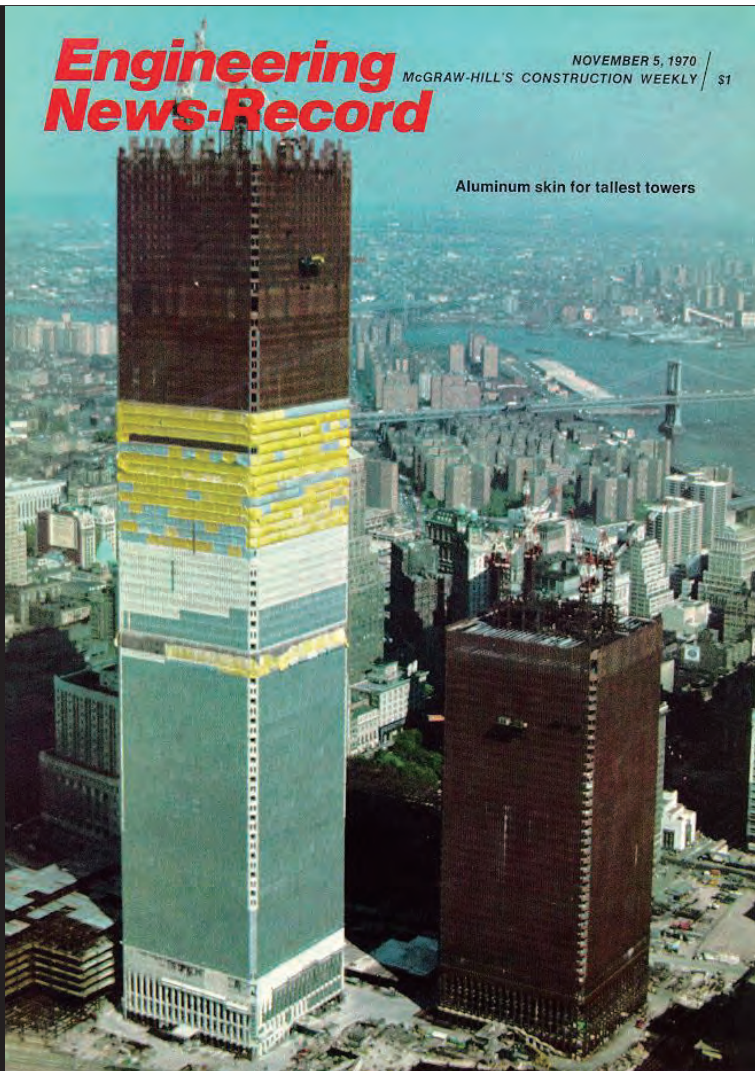


LES GRANDES
CREATIONS
DE L'HOMME

World Trade Centerの建設記録

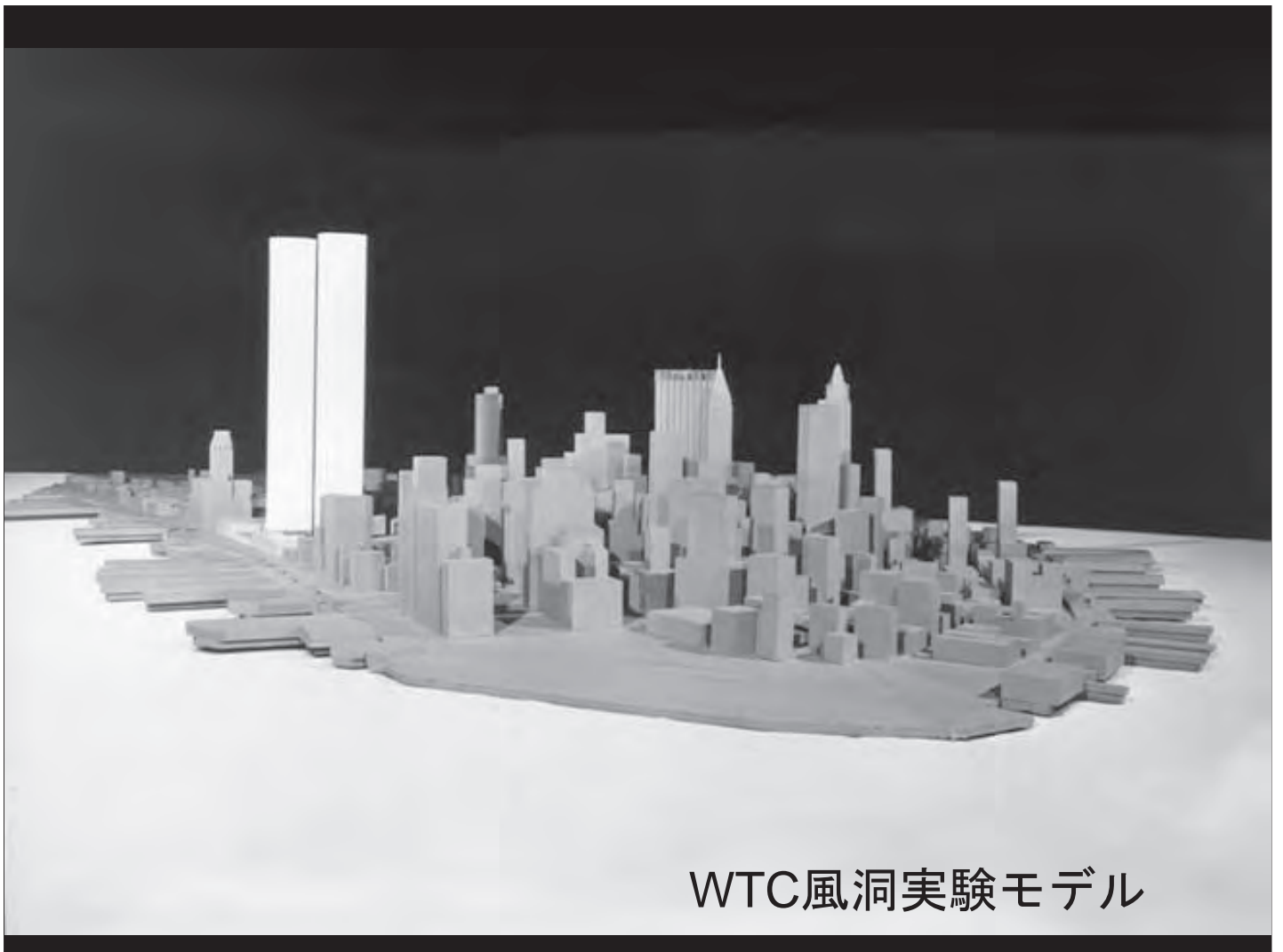


Aluminum skin for tallest towers





完成時のWTCに立つ若かりし頃のロバートソン氏



WTC風洞実験モデル



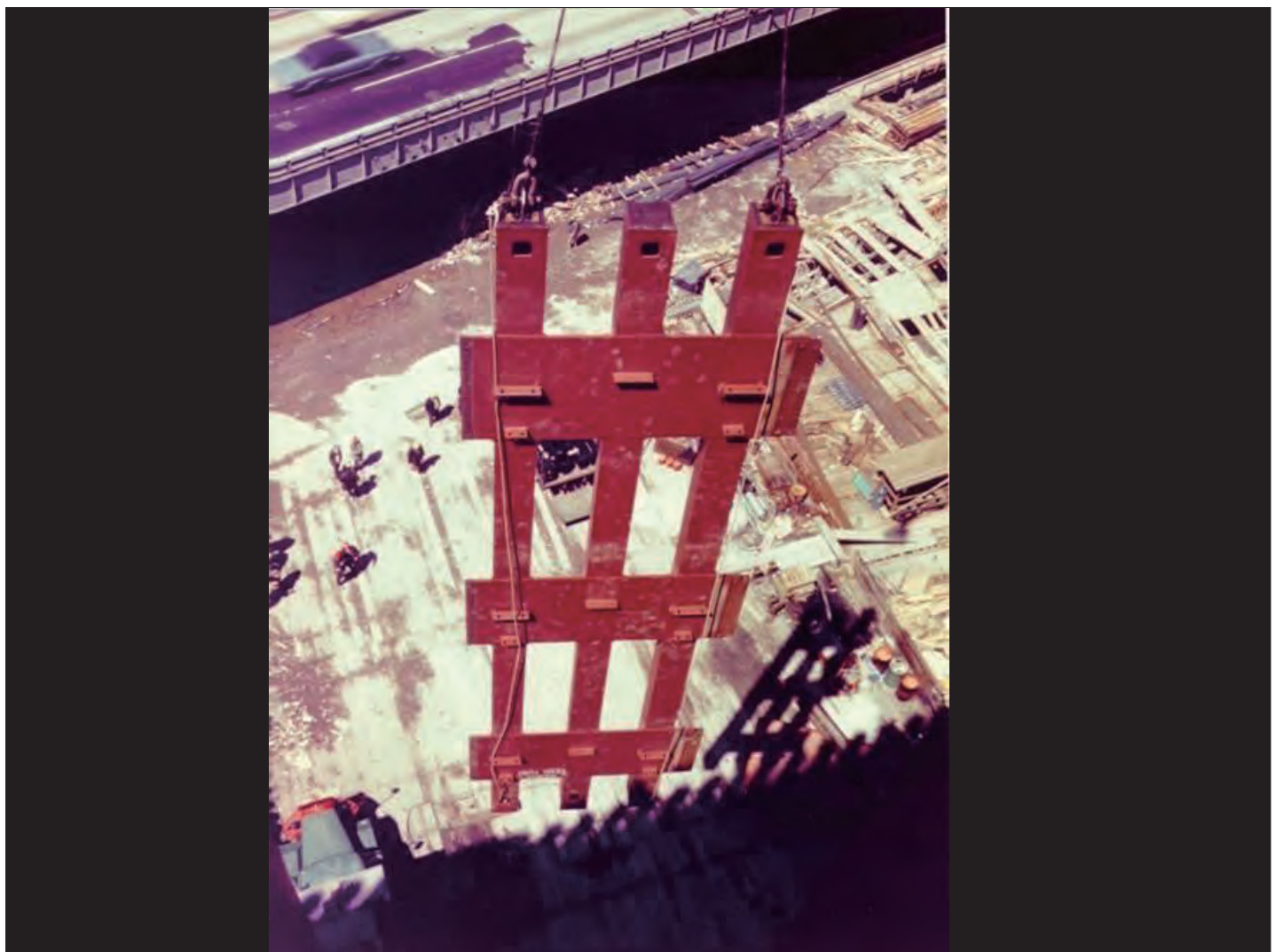
建設時のWTC全景



完成時のWTC
Tower 1 / Tower 2



フロアーデッキ
と小梁の据付





外周柱と
フロアーデッキ・小梁



外周柱の継手
が同一レベル
にならないよ
うにする

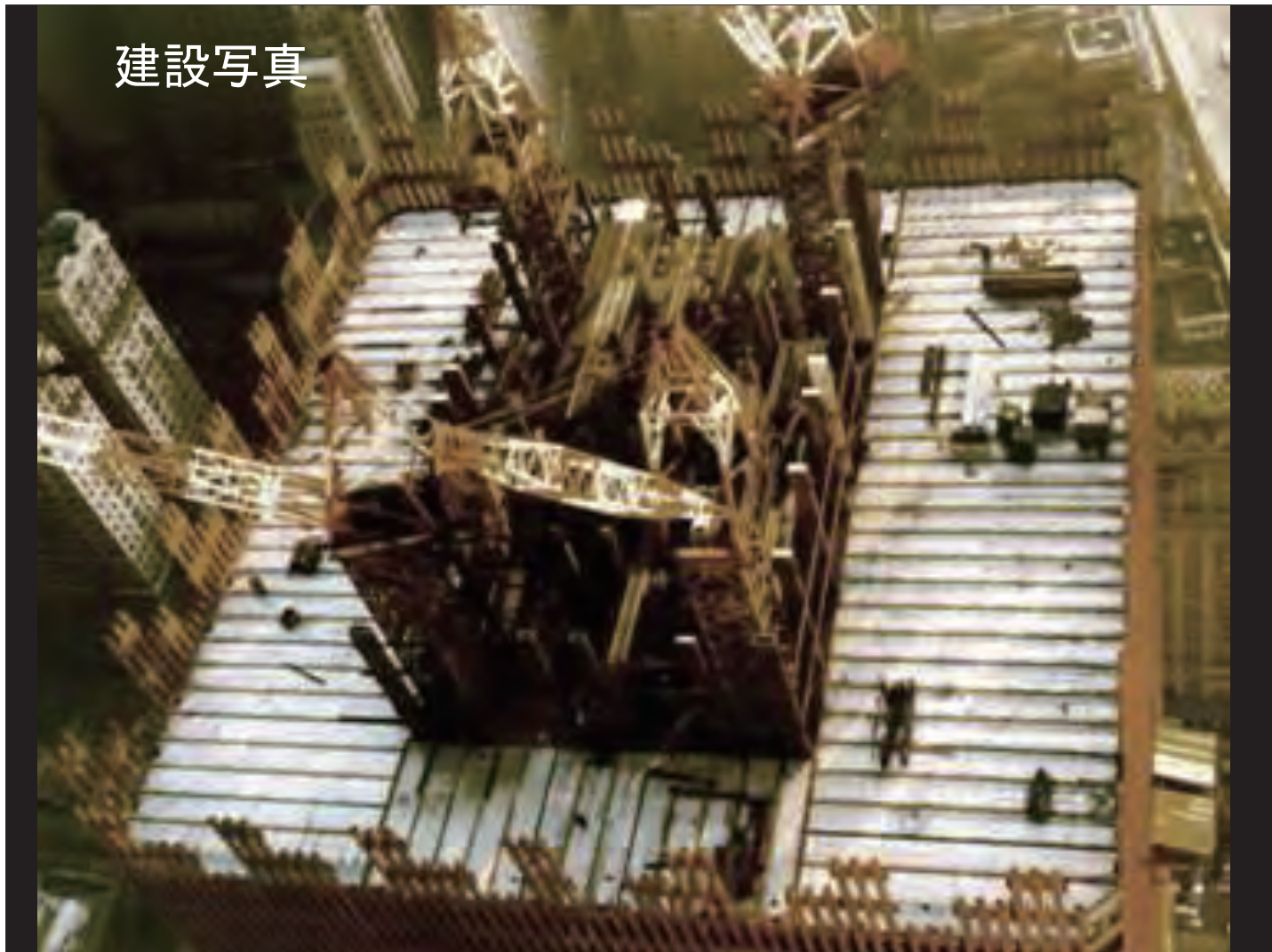


外周柱の下部：
上部柱の本数が増える

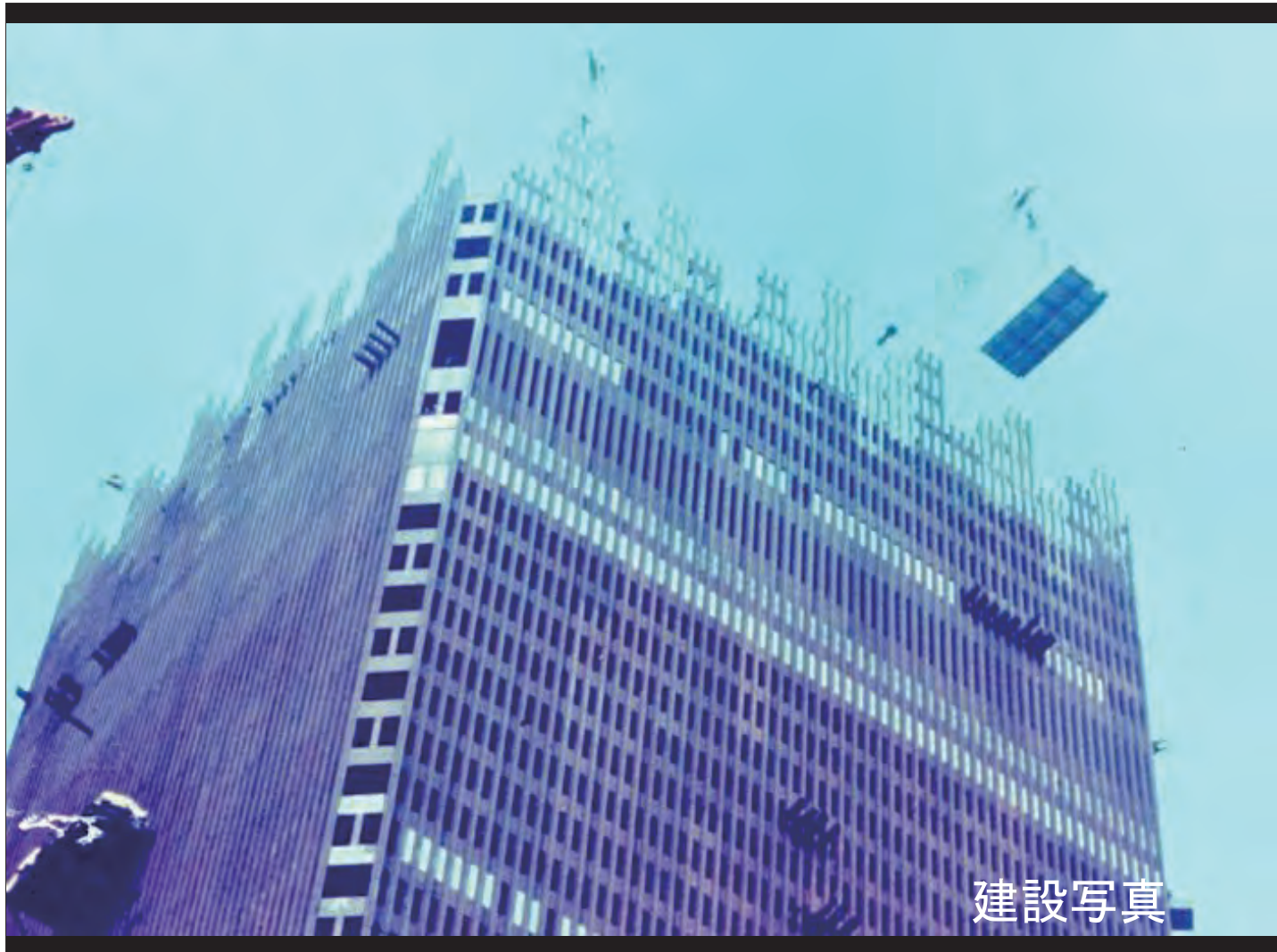


建設写真

建設写真



建設写真



建設写真



建設写真



建設写真



建設写真



建設写真



建設写真



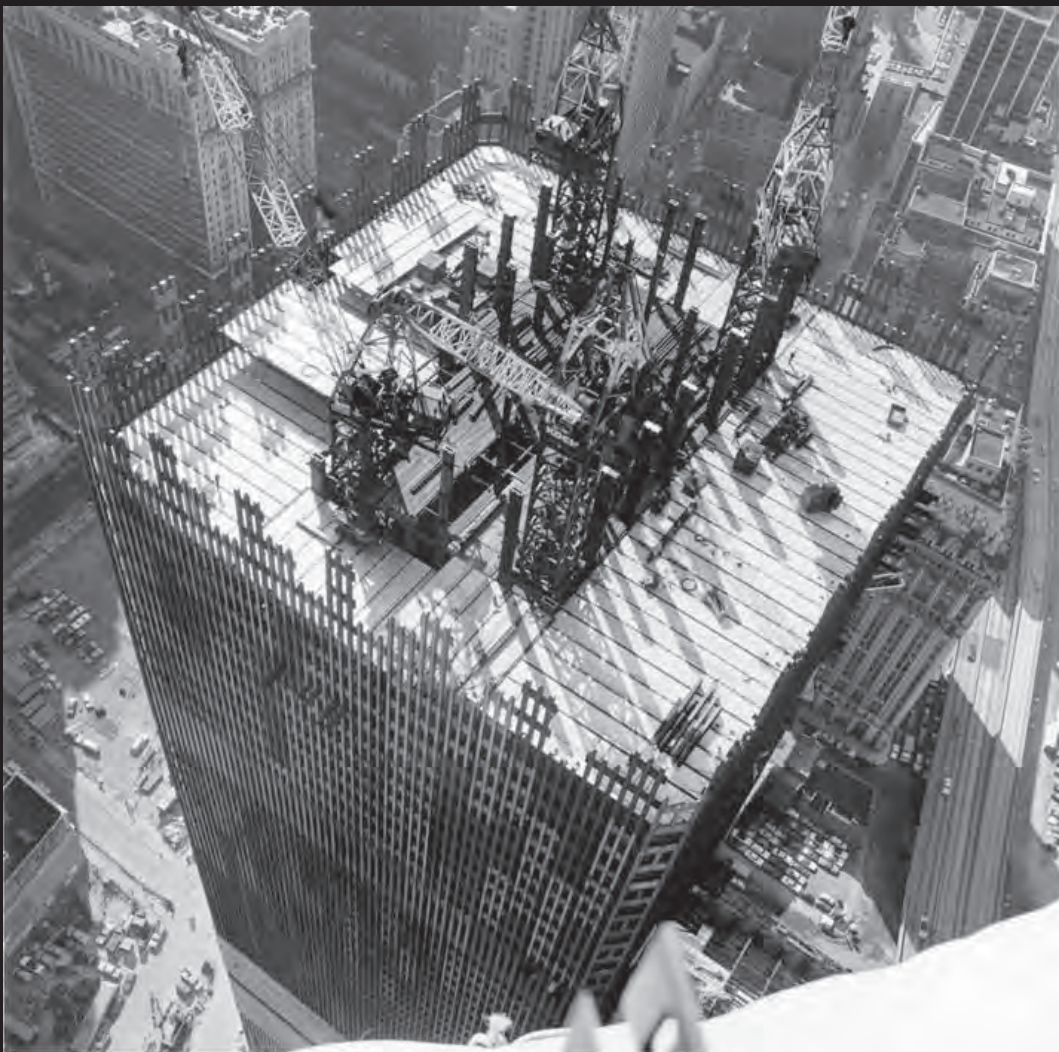
建設写真



建設写真



建設写真



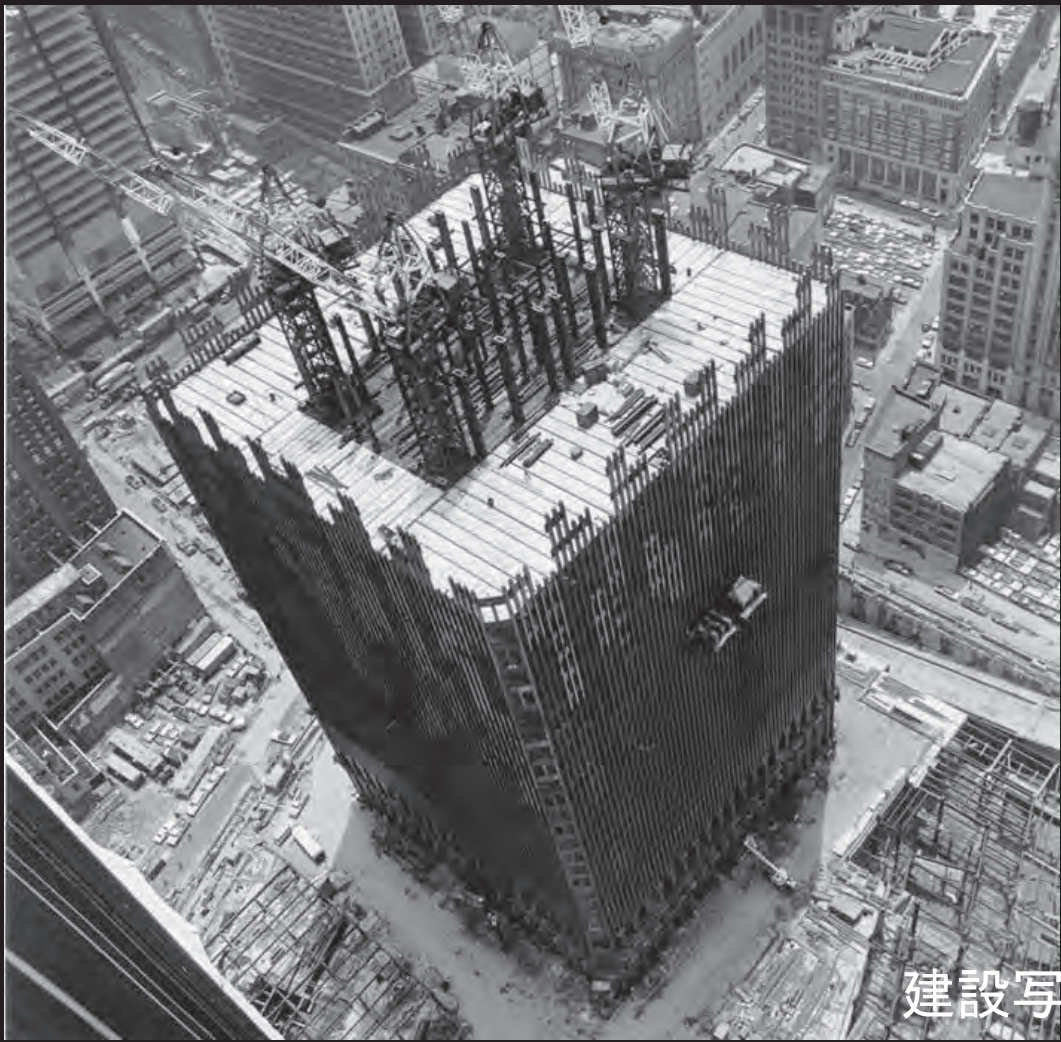
建設写真



建設写真



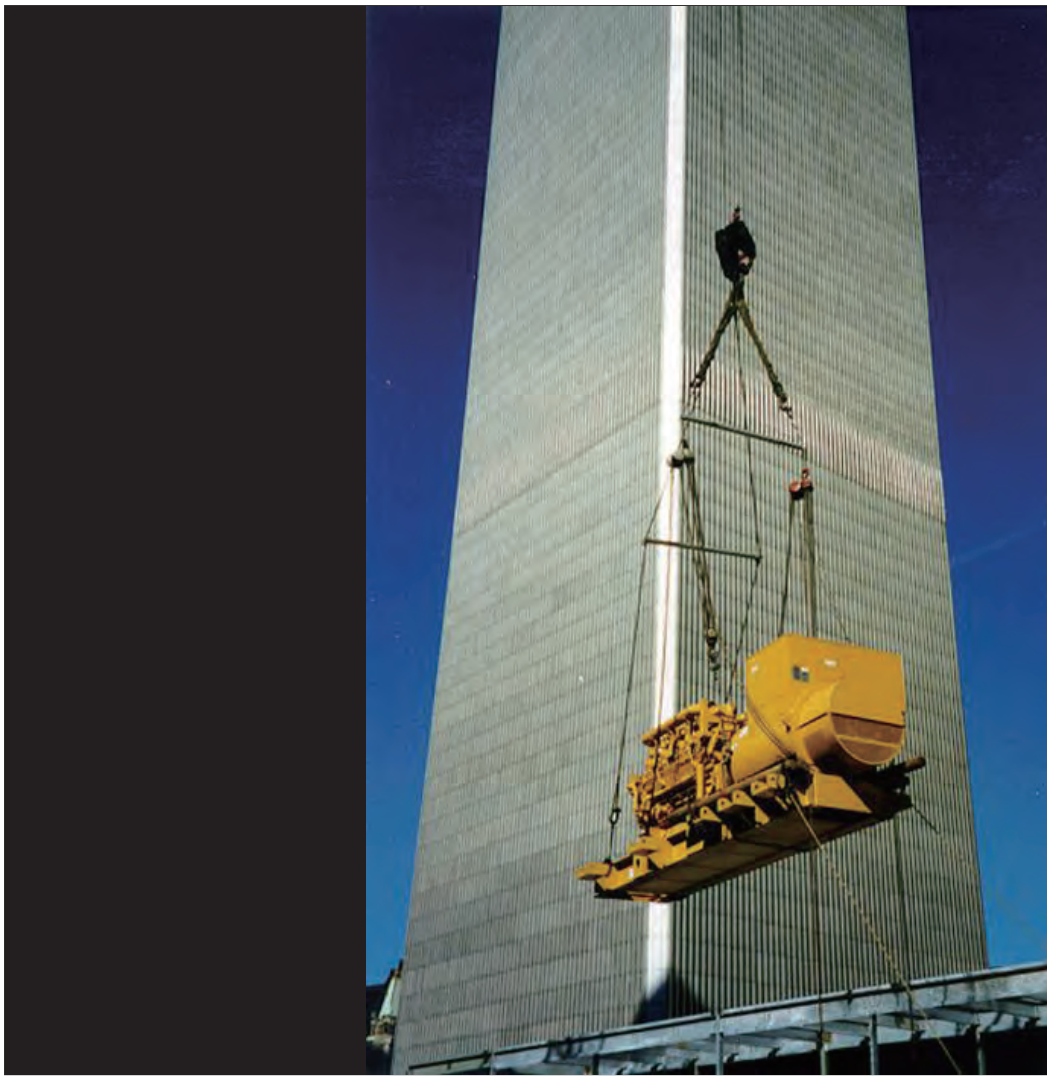
建設写真



建設写真



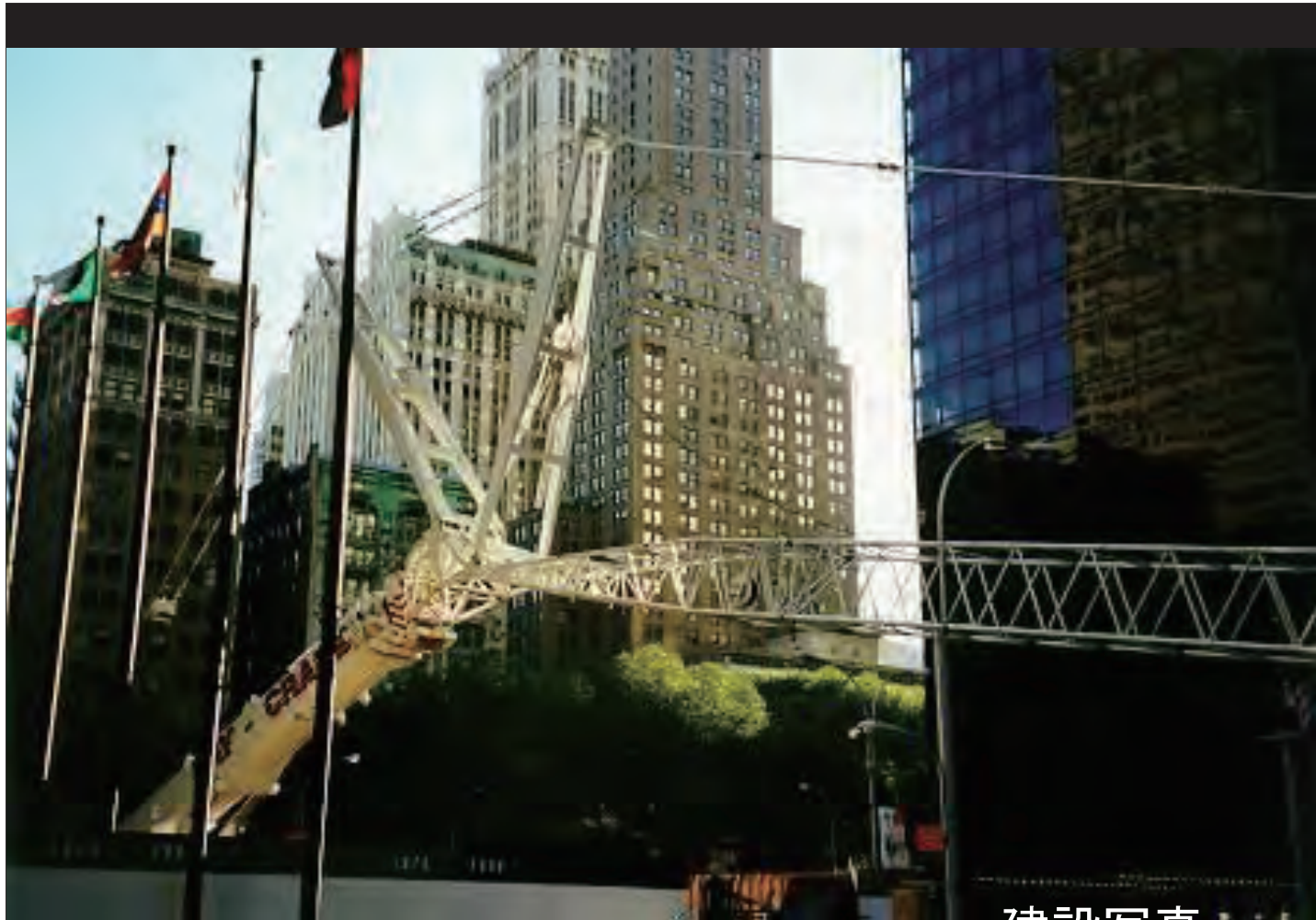
建設写真



建設写真



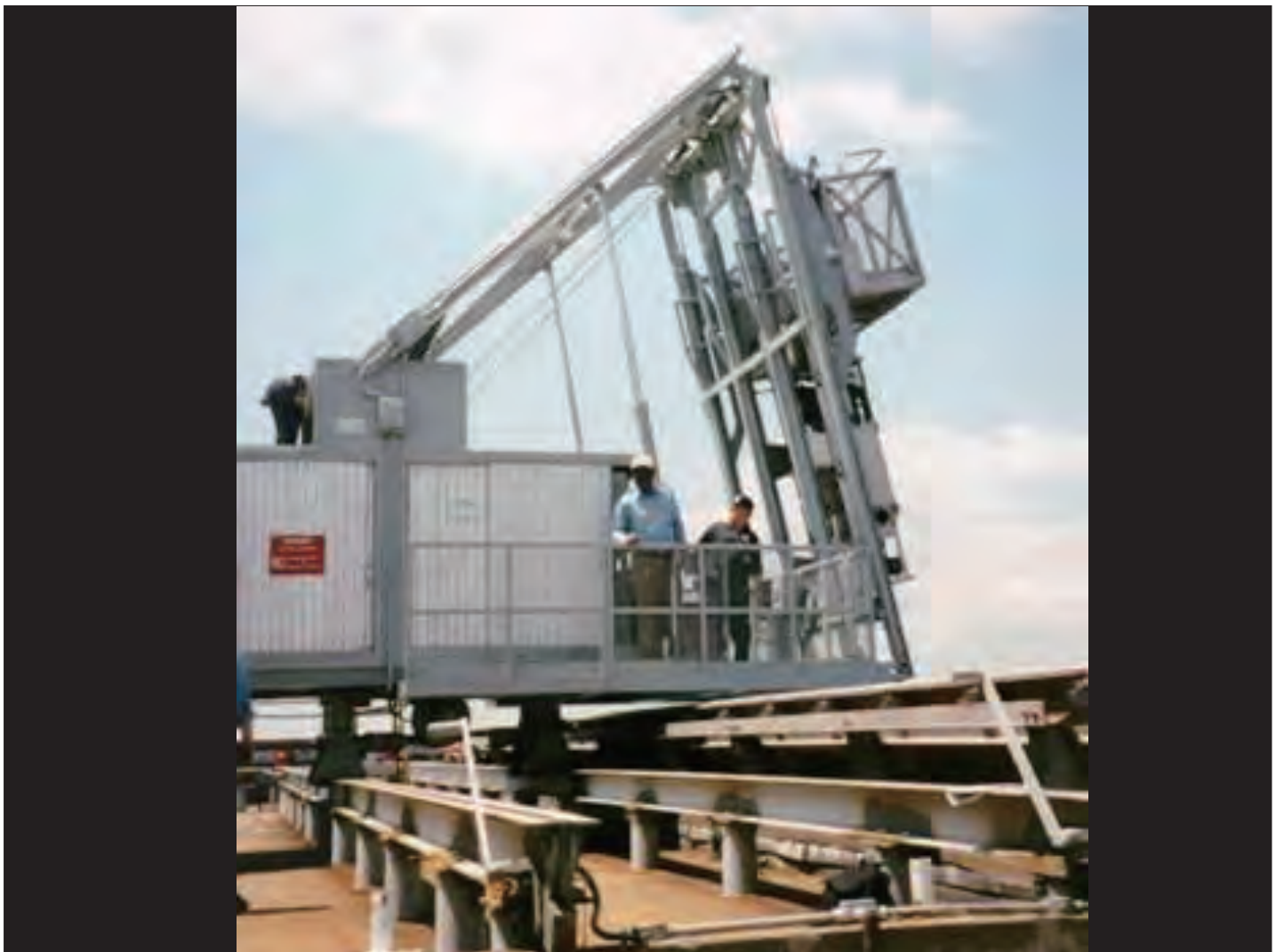
建設写真



建設写真



建設写真





WTC最上部：
アンテナ



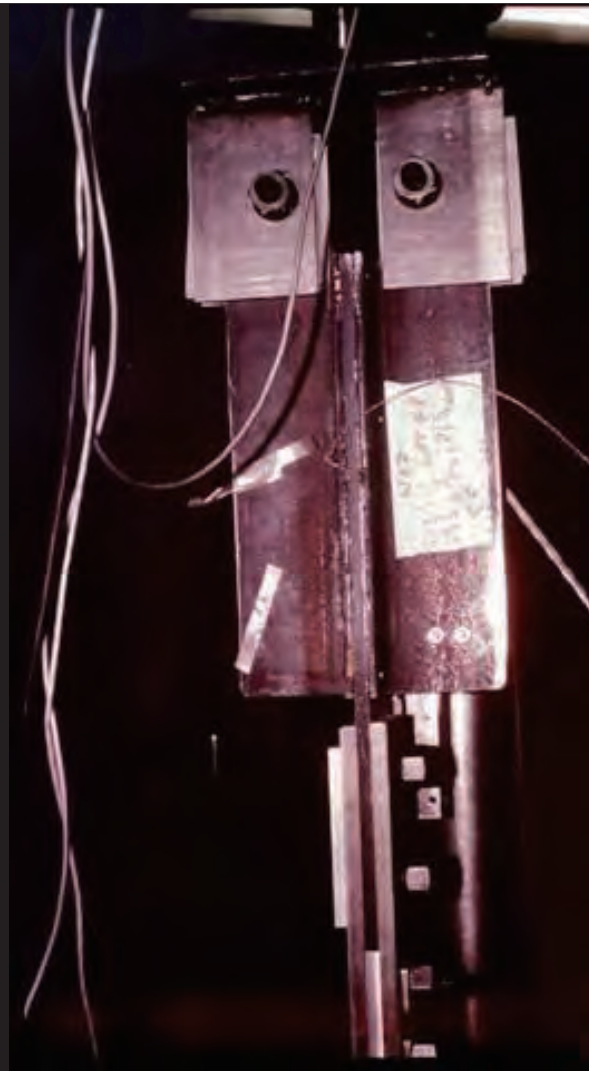
WTC最上部：
アンテナ



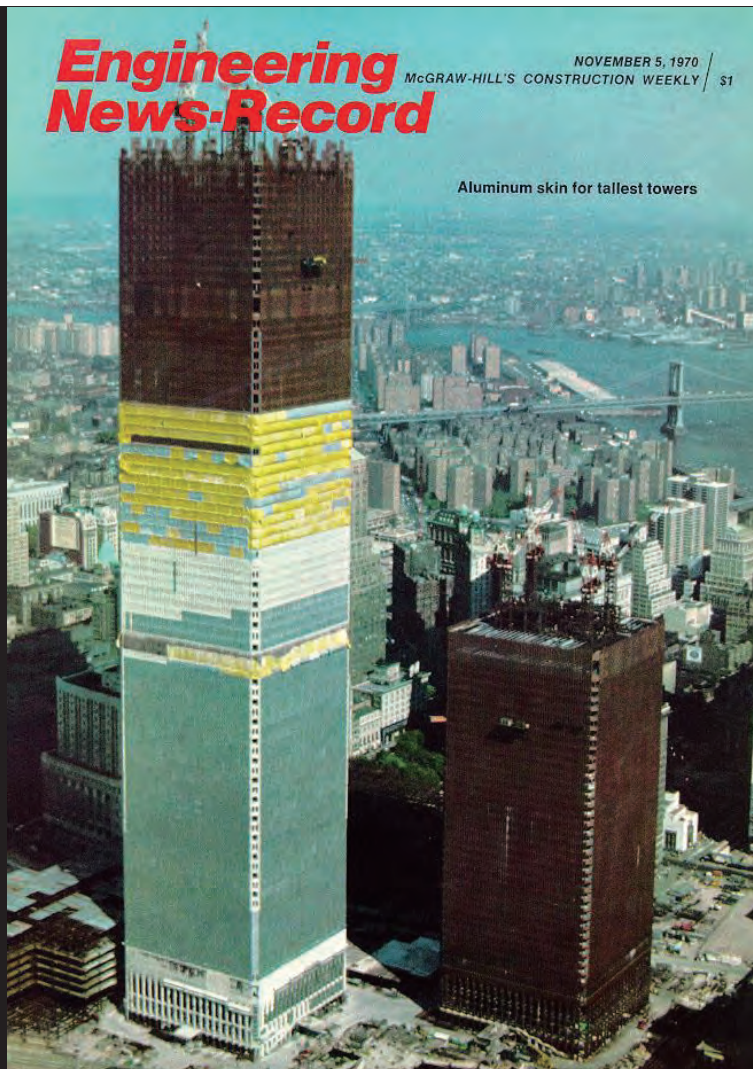
建設写真

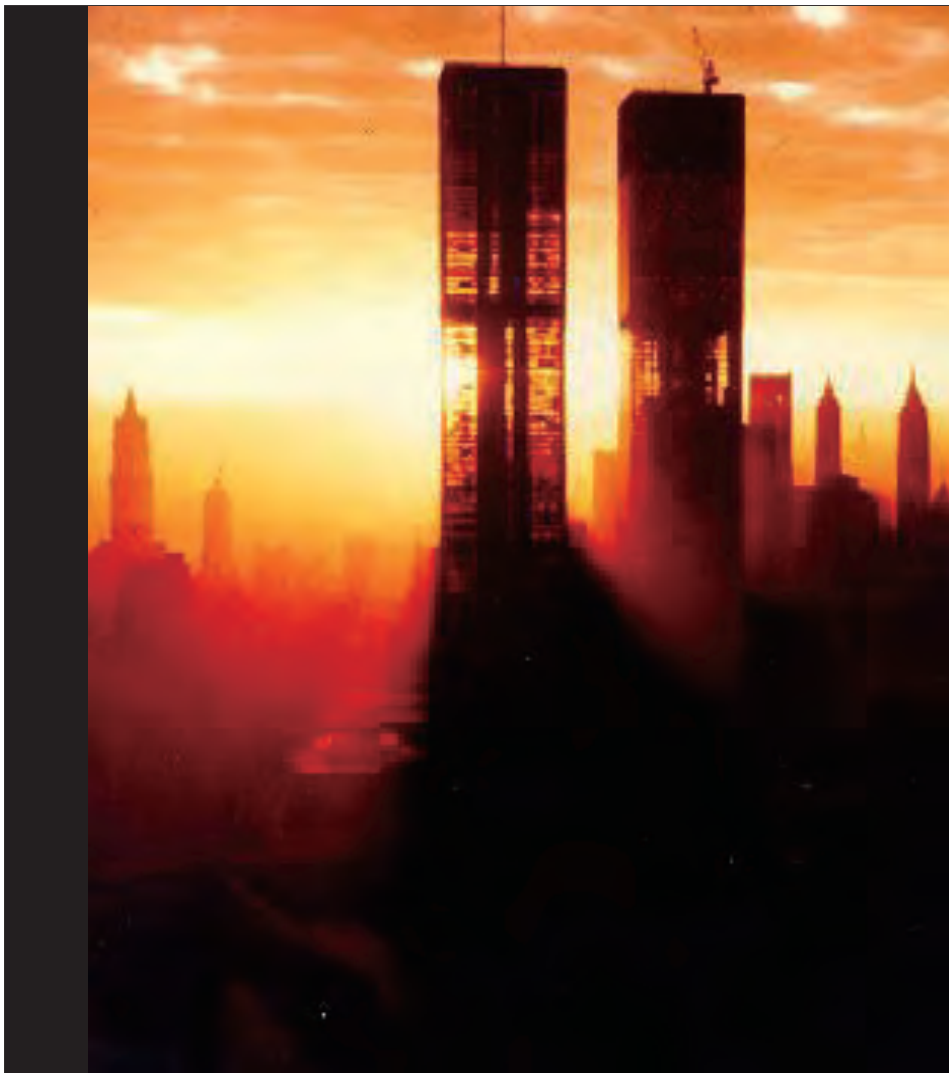


建設写真

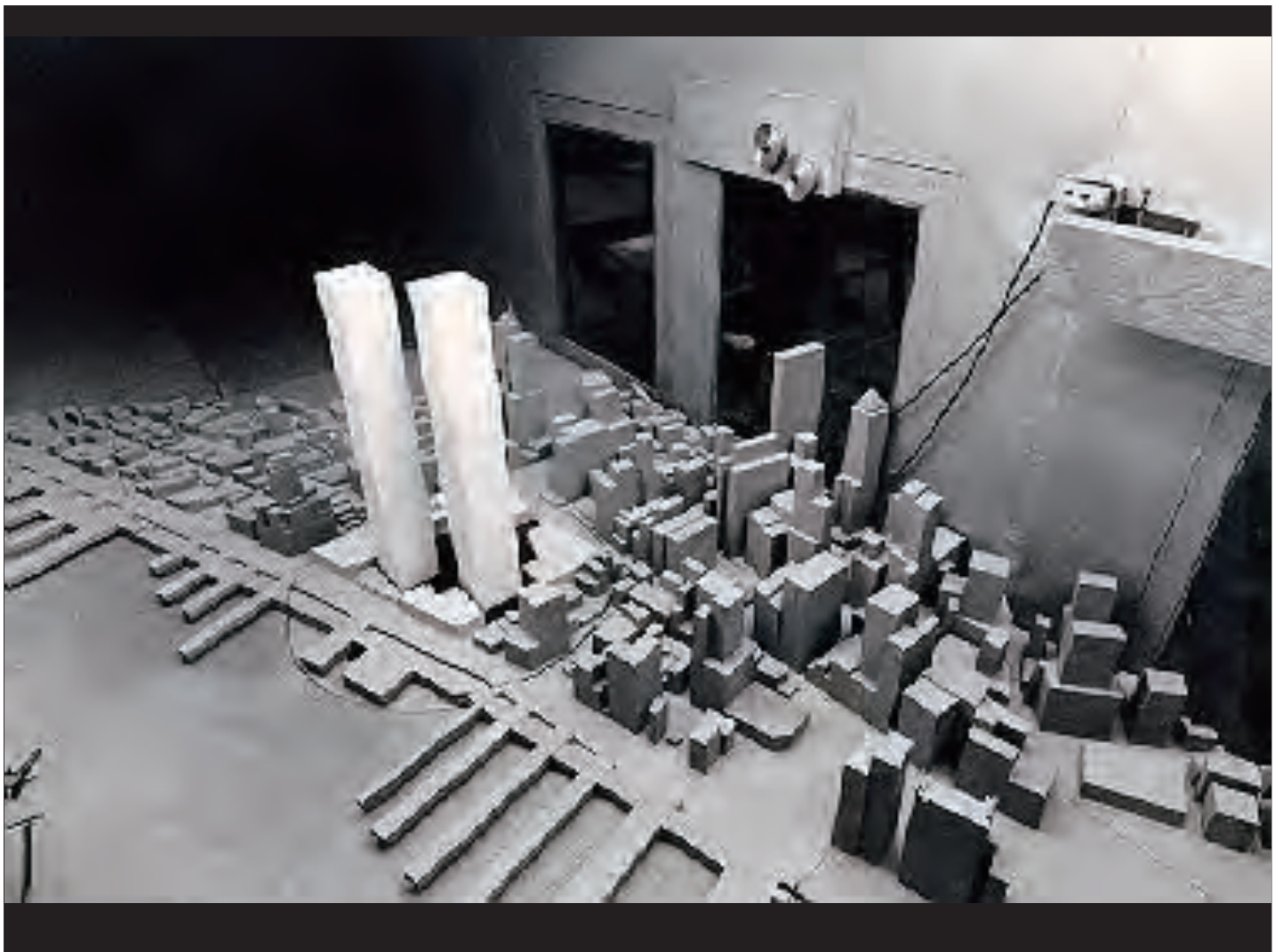


外周柱と小梁に取り付けられた粘弾性ダンパー





ロバートソン氏
の最も好きな
WTC写真の一枚





Civil Engineering

JUNE 1971

ENVIRONMENTAL DESIGN AND ENGINEERED CONSTRUCTION

ASCE

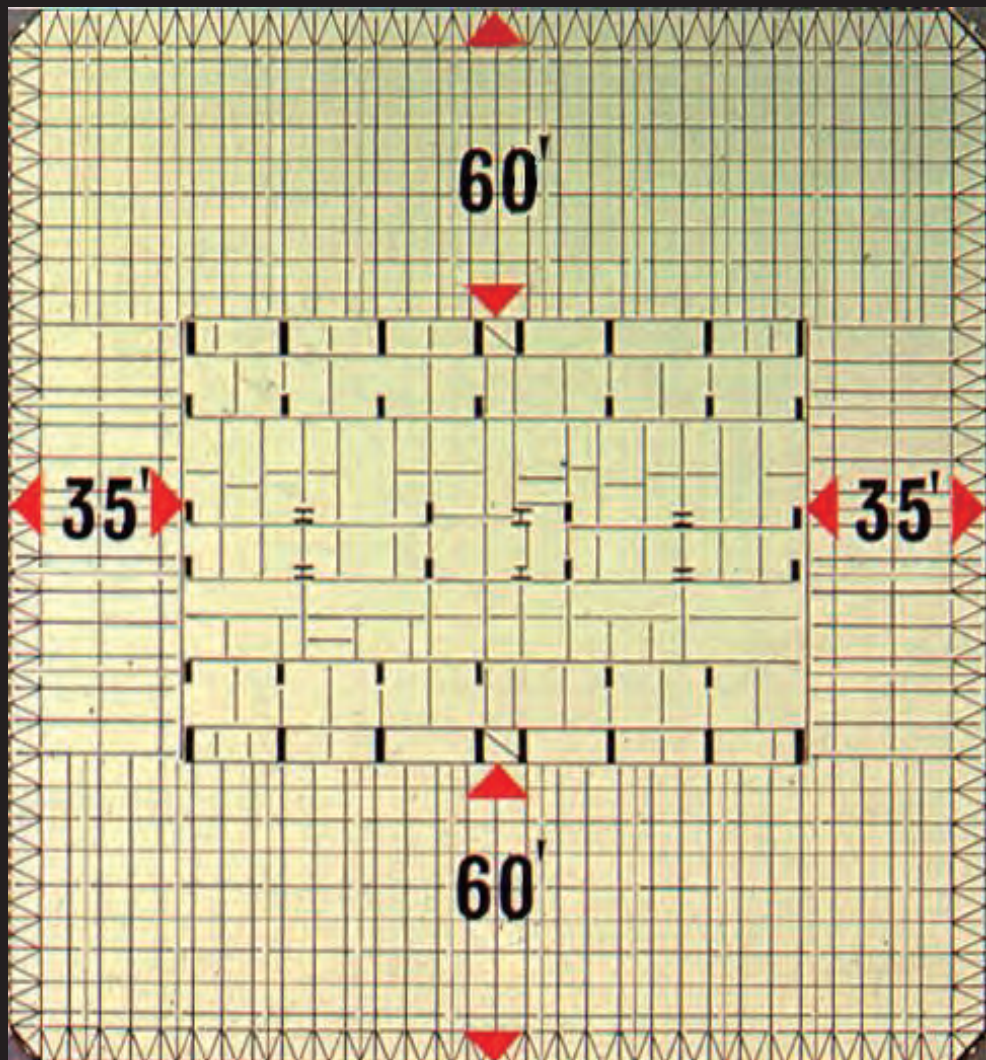


IN THIS ISSUE:

- Largest graving dock
- Recruiting and training engineers
- Underground construction specifications



Outstanding Civil Engineering Achievement of 1971: World Trade Center, New York City



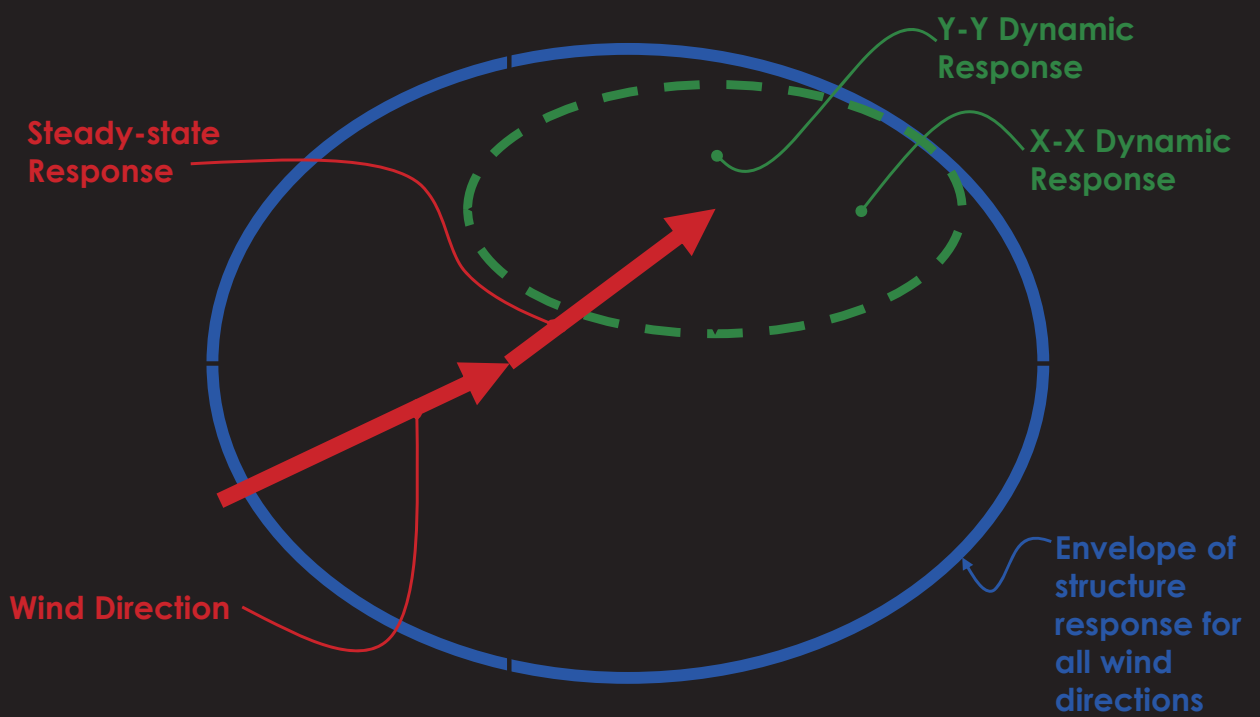


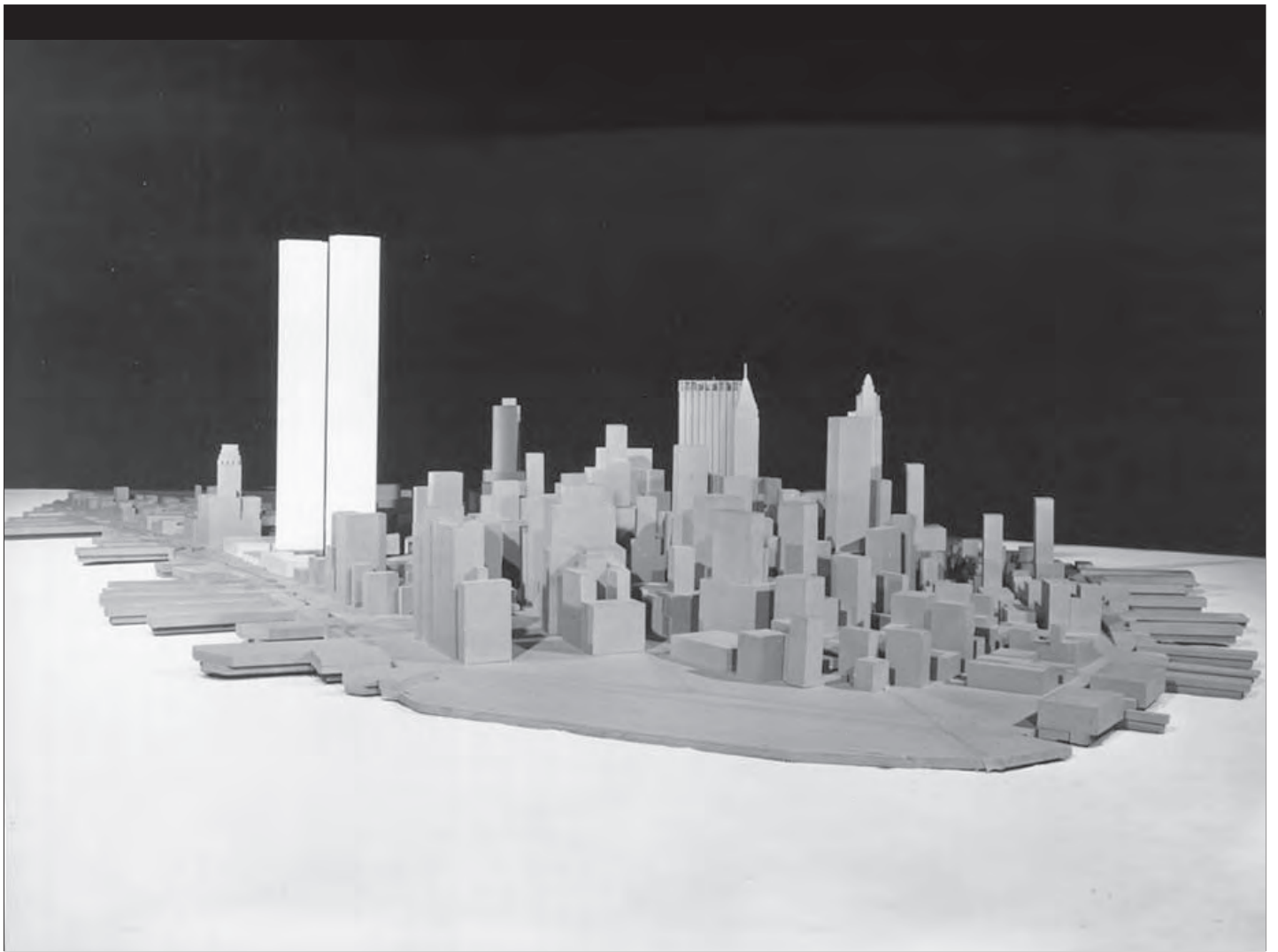
SITE OF WORLD TRADE CENTER TO BE BUILT BY THE PORT OF NEW YORK AUTHORITY IN LOWER MANHATTAN

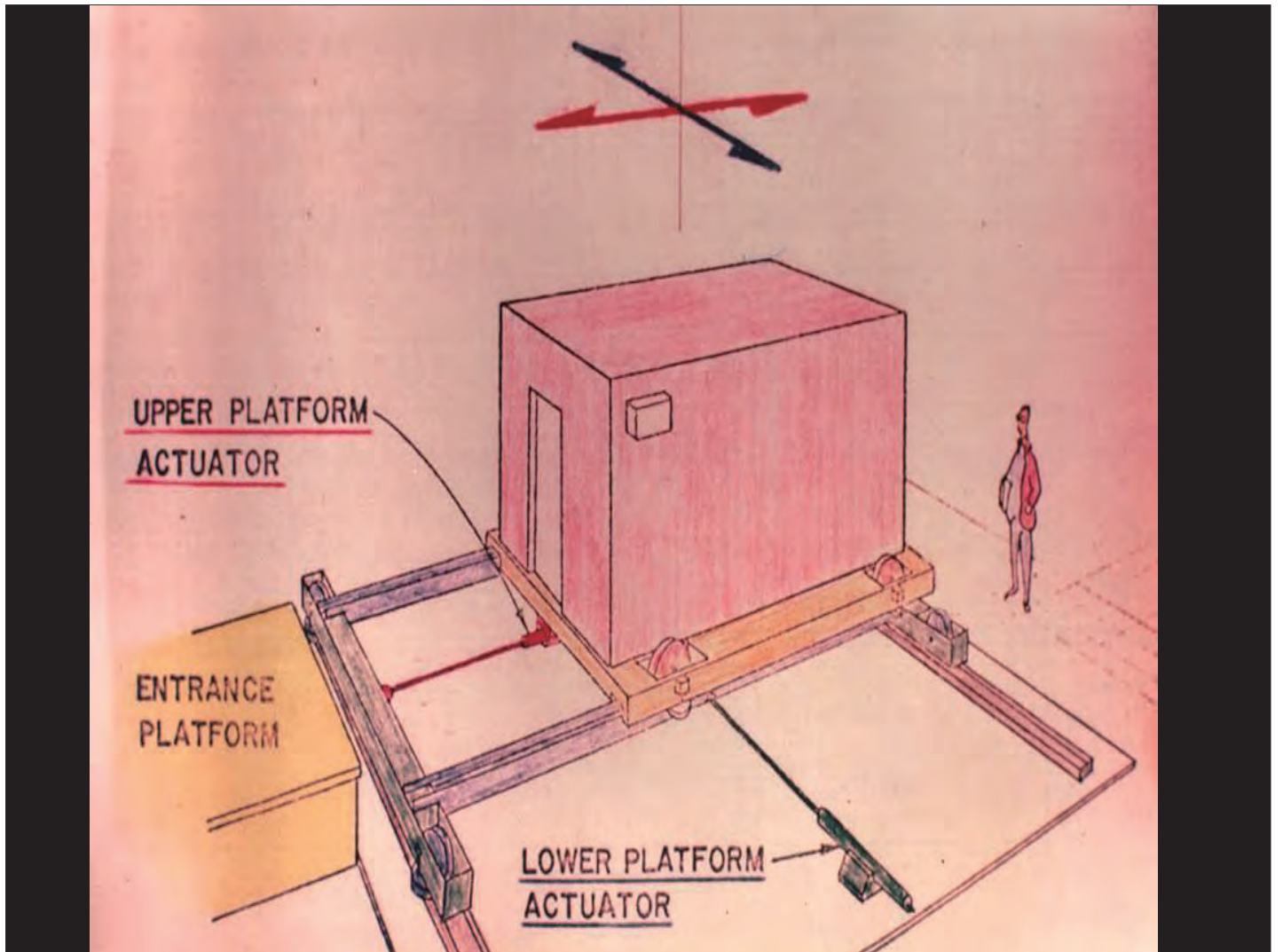
建設用地



1960年当時：
コンピューターで
図面管理

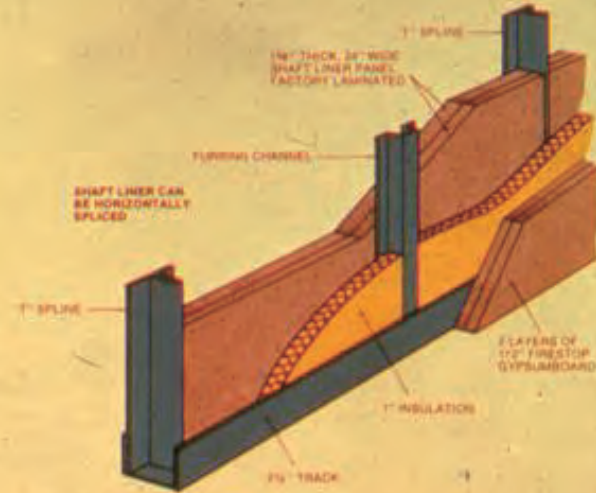
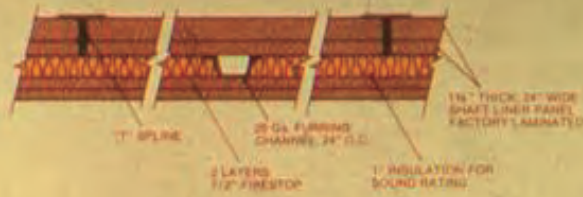






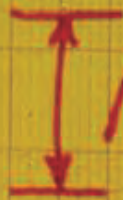
STC 47 FIRE TEST UL 514

2 HOUR CAVITY WALL FIRE RATED BOTH SIDES



SYSTEM #8000

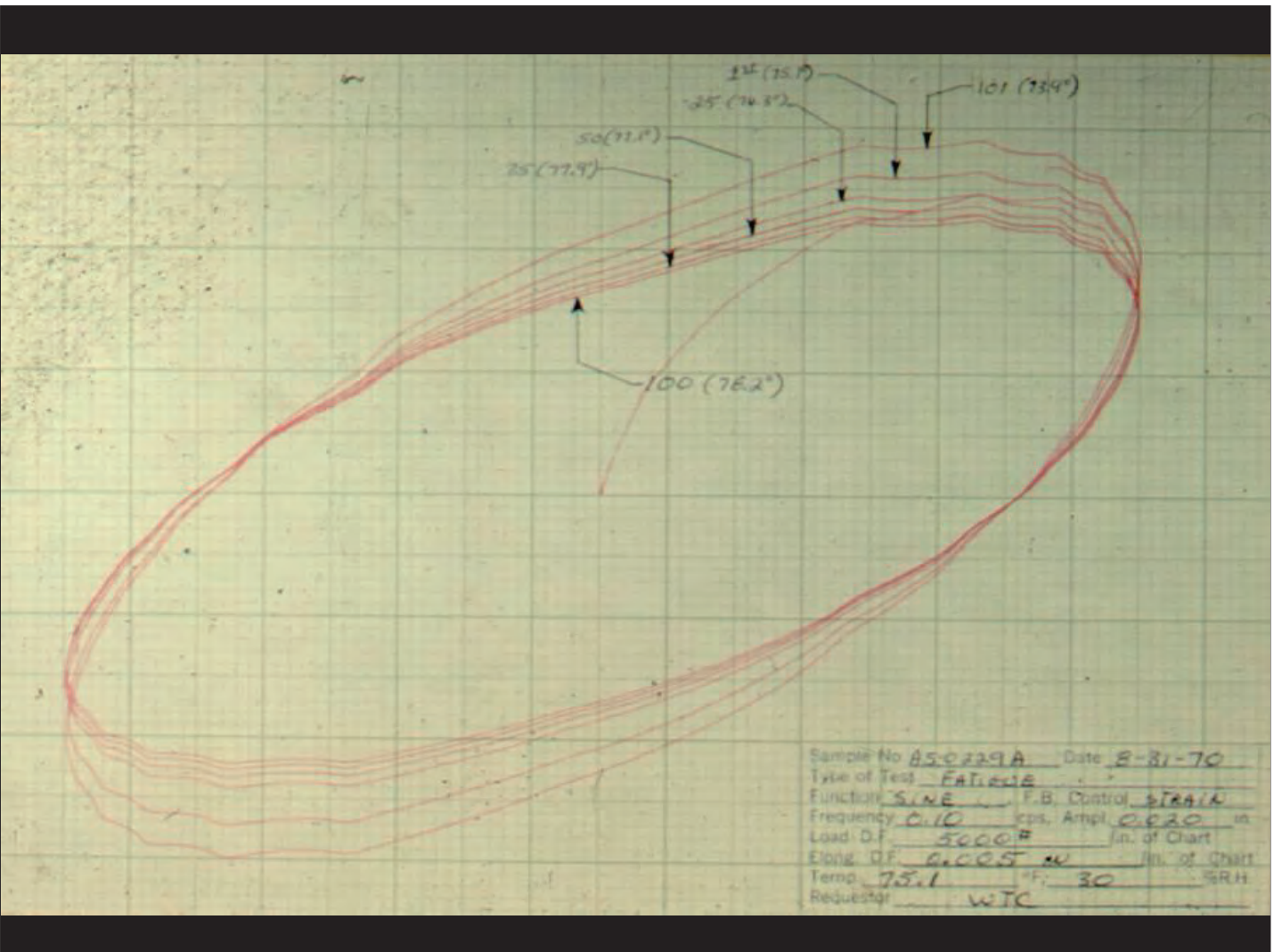
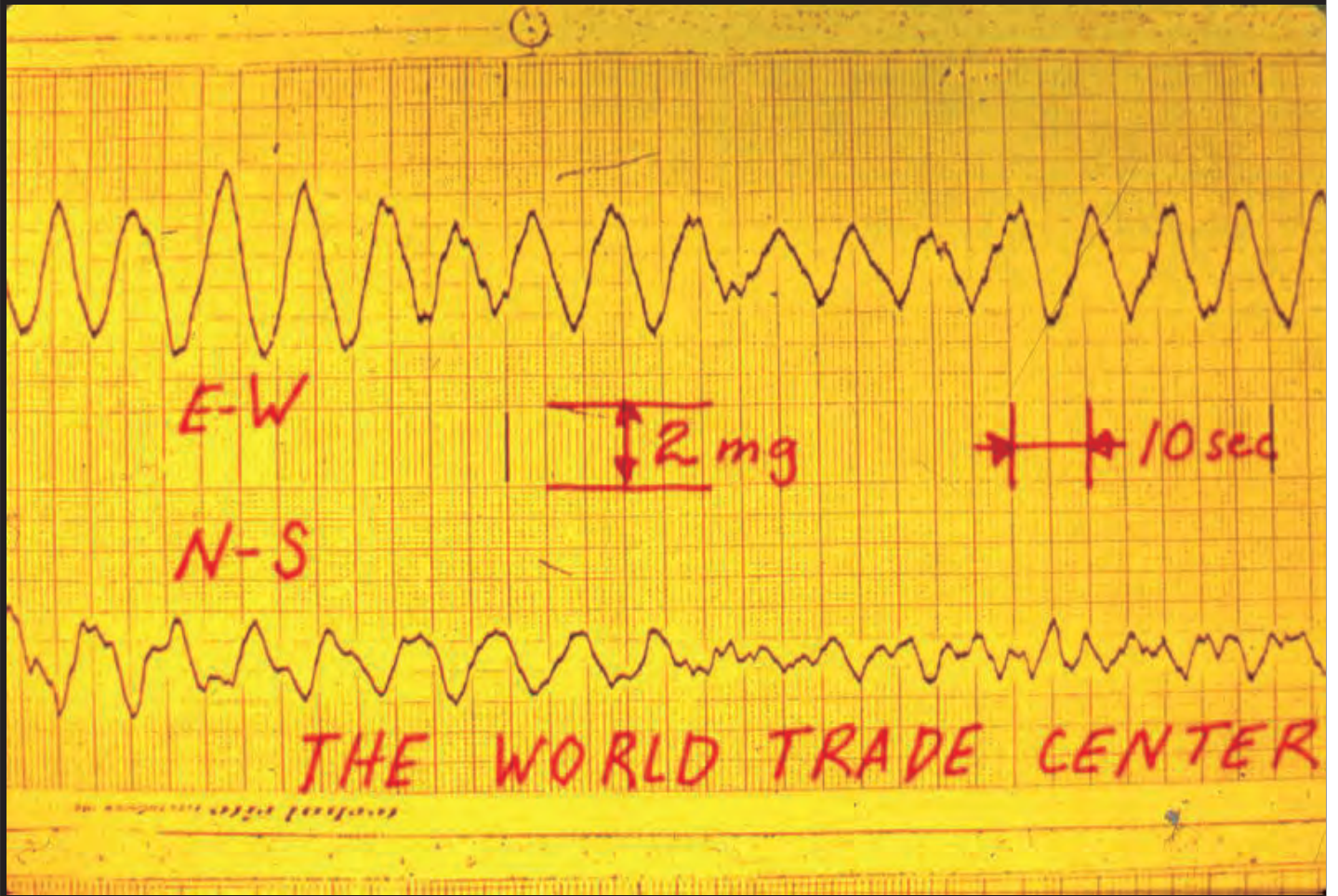
E-W

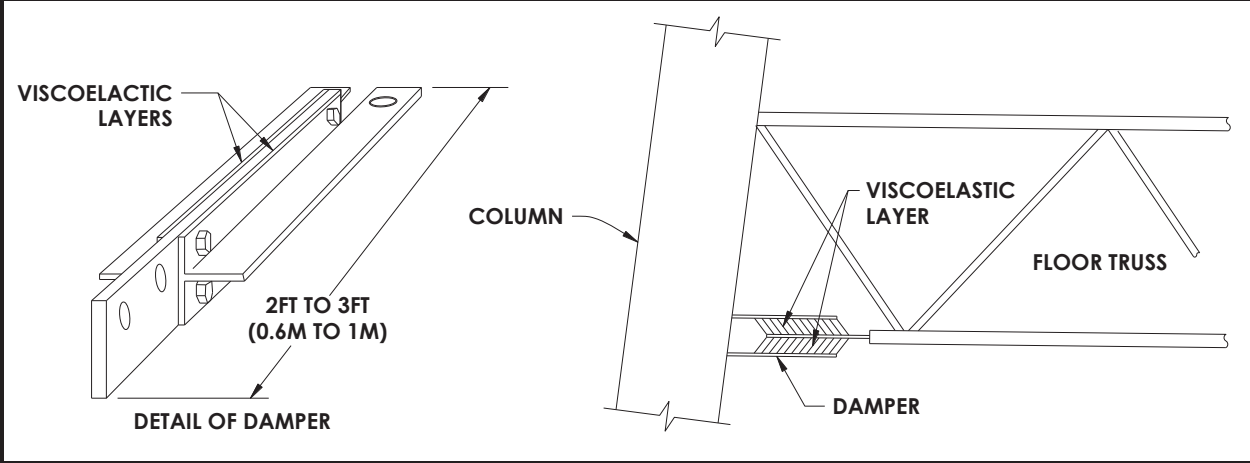


10 SEC

N-S

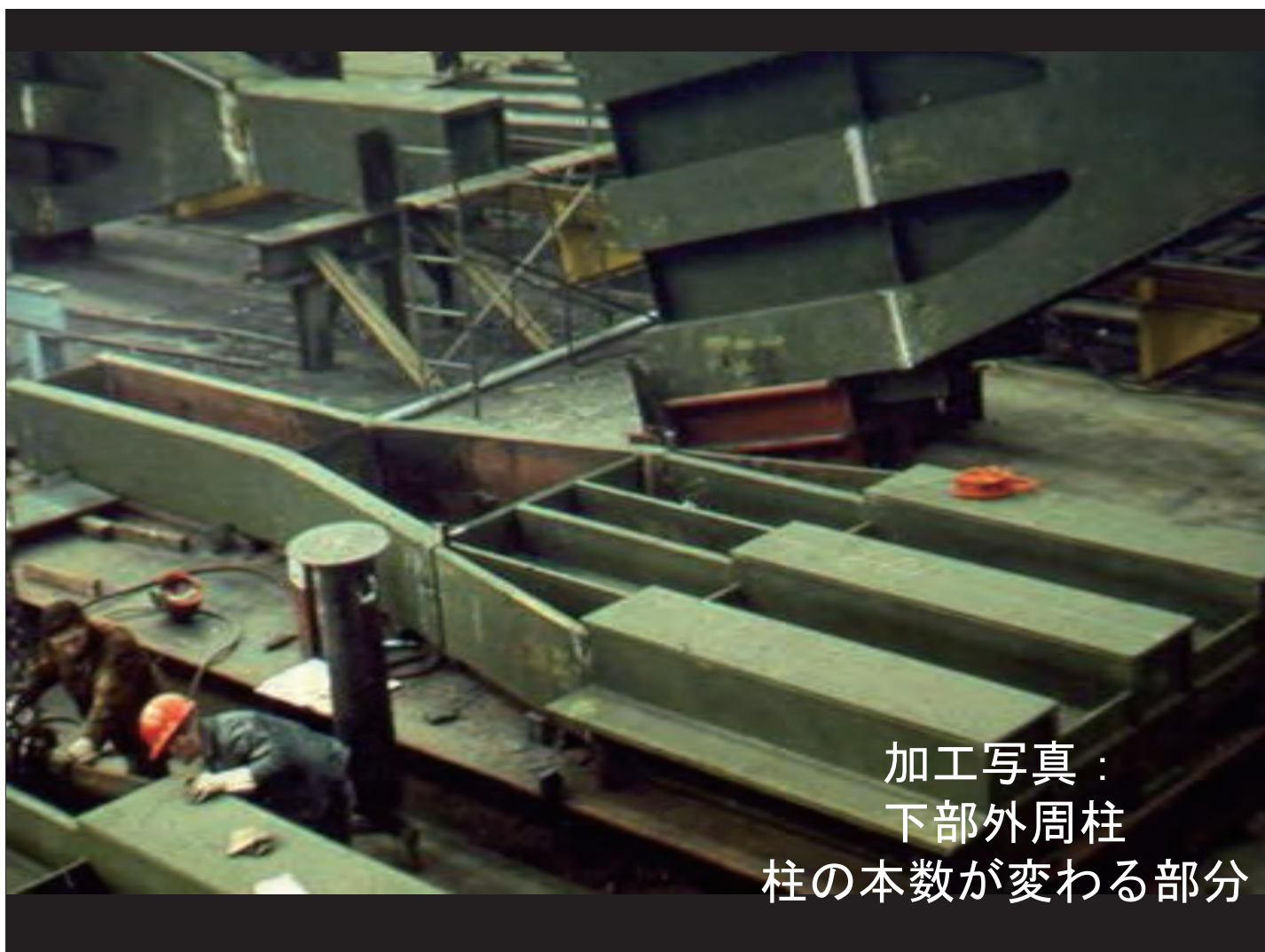
EMPIRE STATE BUILDING



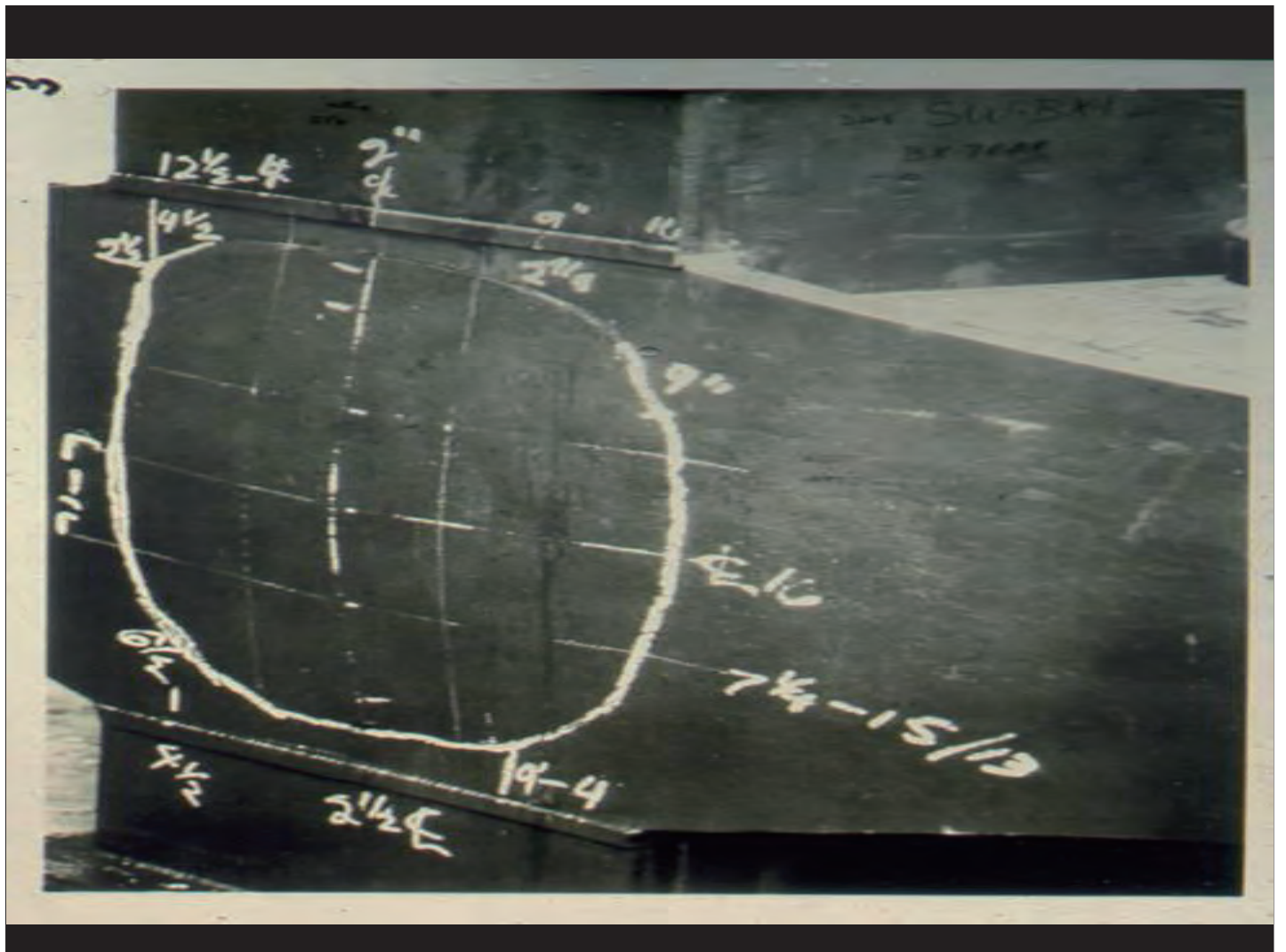


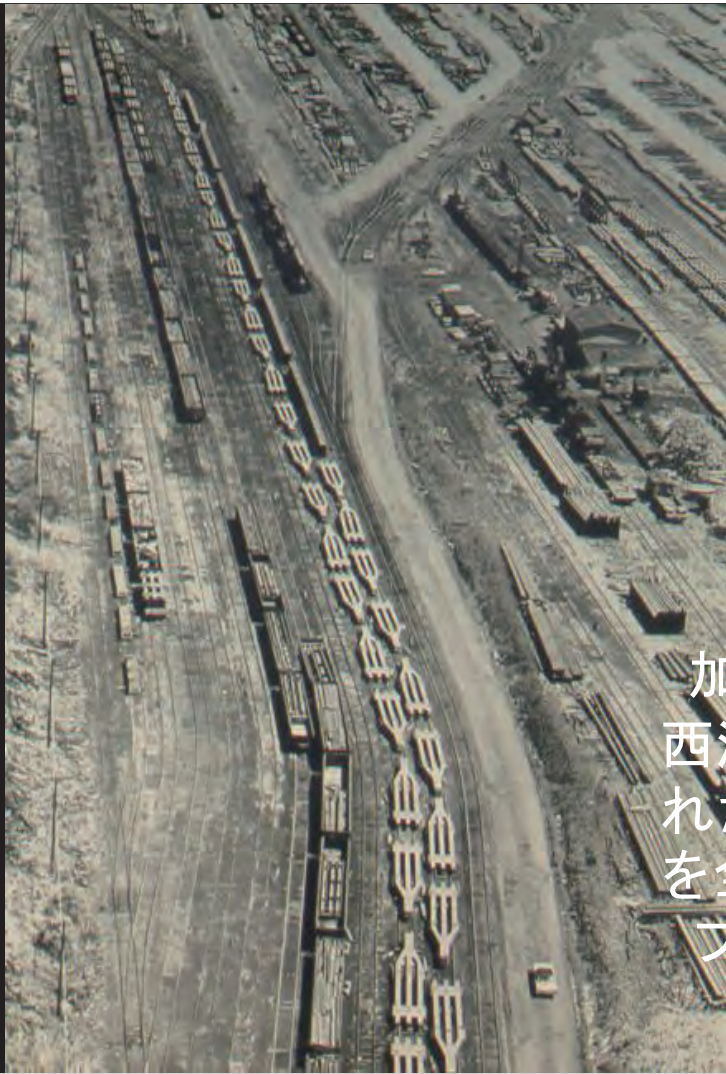


外周柱と小梁に
取り付けられた
粘弾性ダンパー



加工写真：
下部外周柱
柱の本数が変わる部分



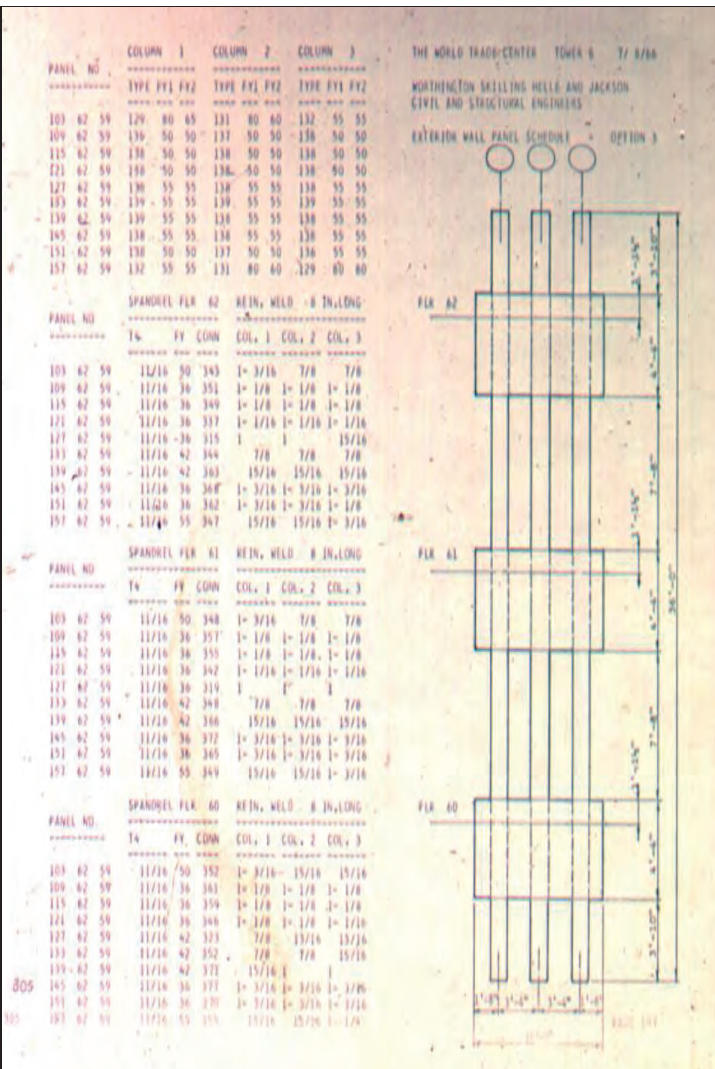


加工品の輸送：
西海岸に陸揚げされた日本製の鋼材を全米30社以上の
ファブで加工、
鉄道で輸送

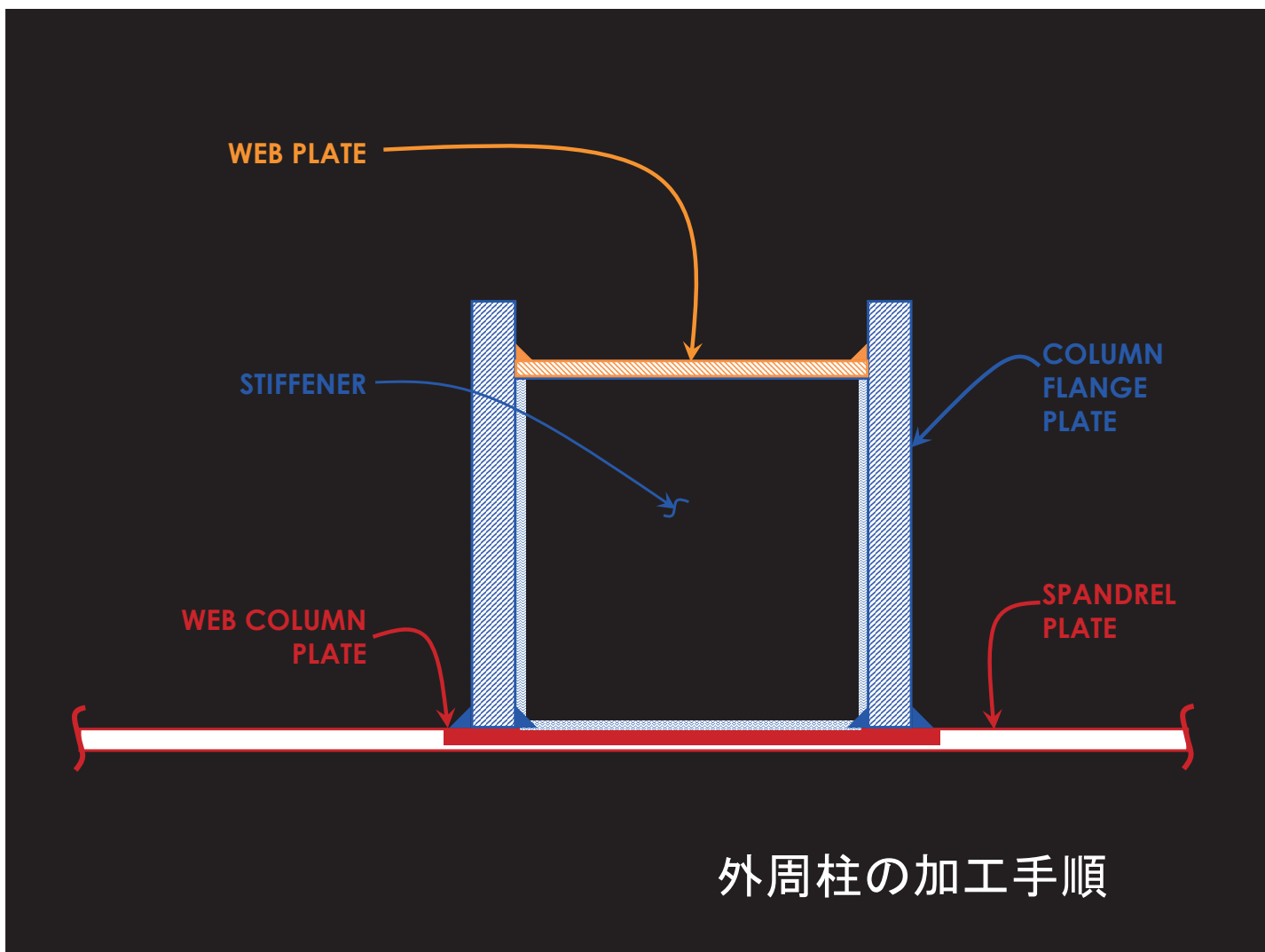




September 11 :
 中央の金色
 の地球儀は、
 New York南端
 Battery Park
 に今はある。

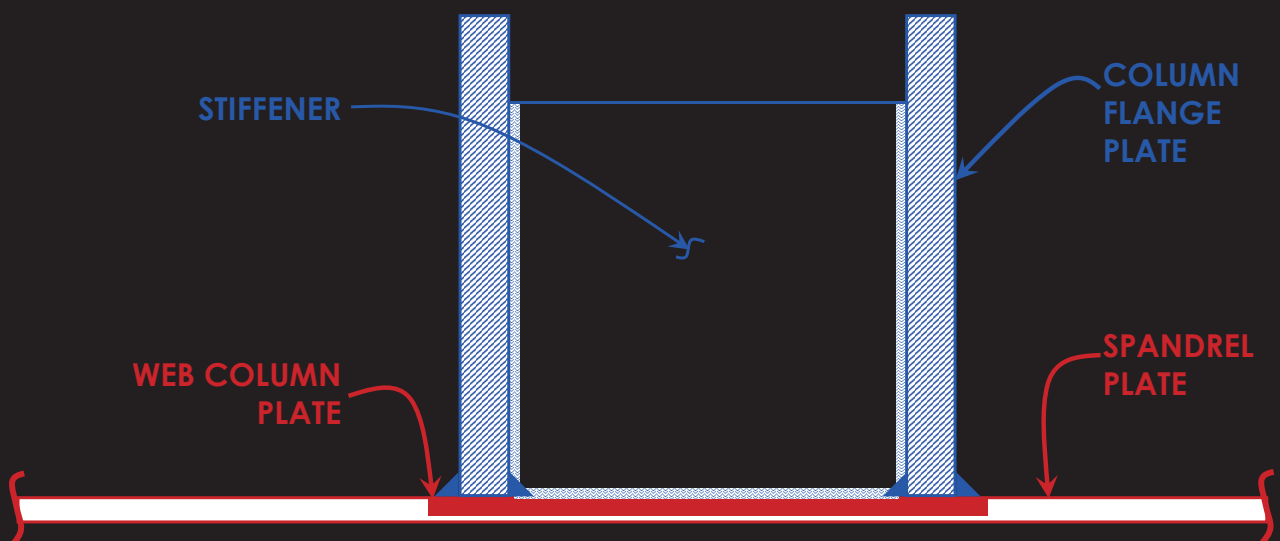


外周柱の図面と
 コンピューターに
 よる図面管理

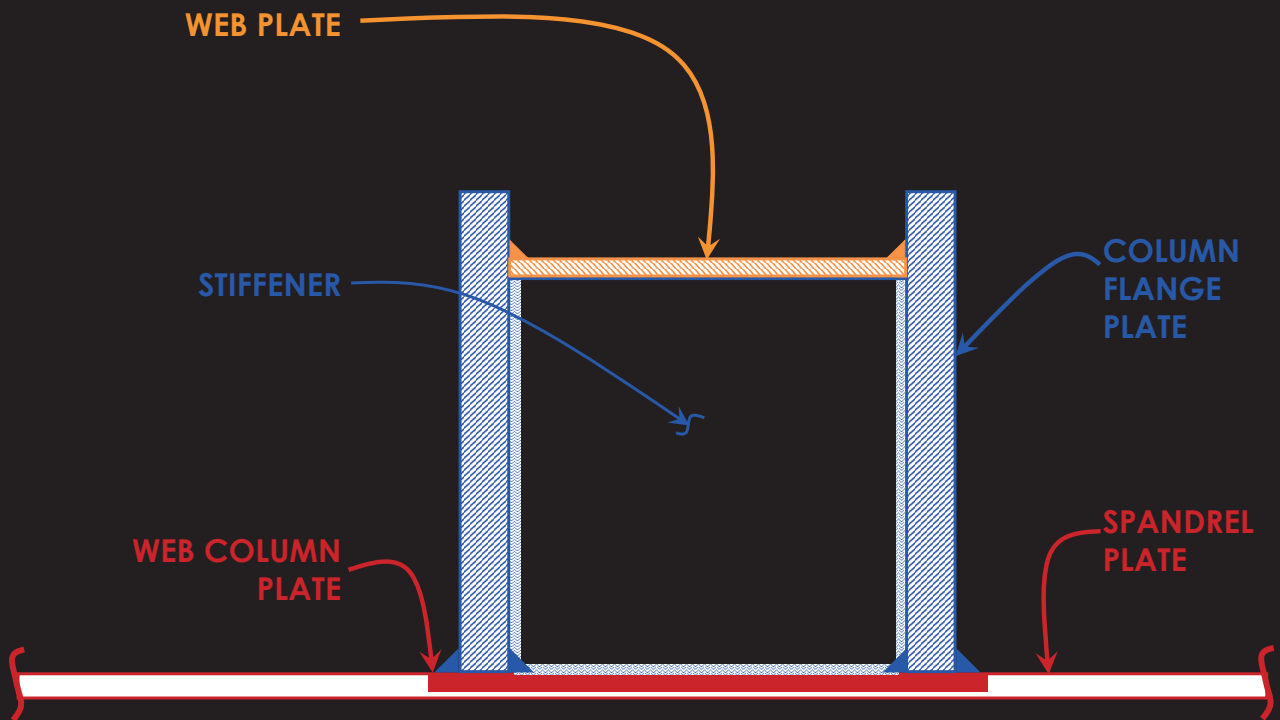




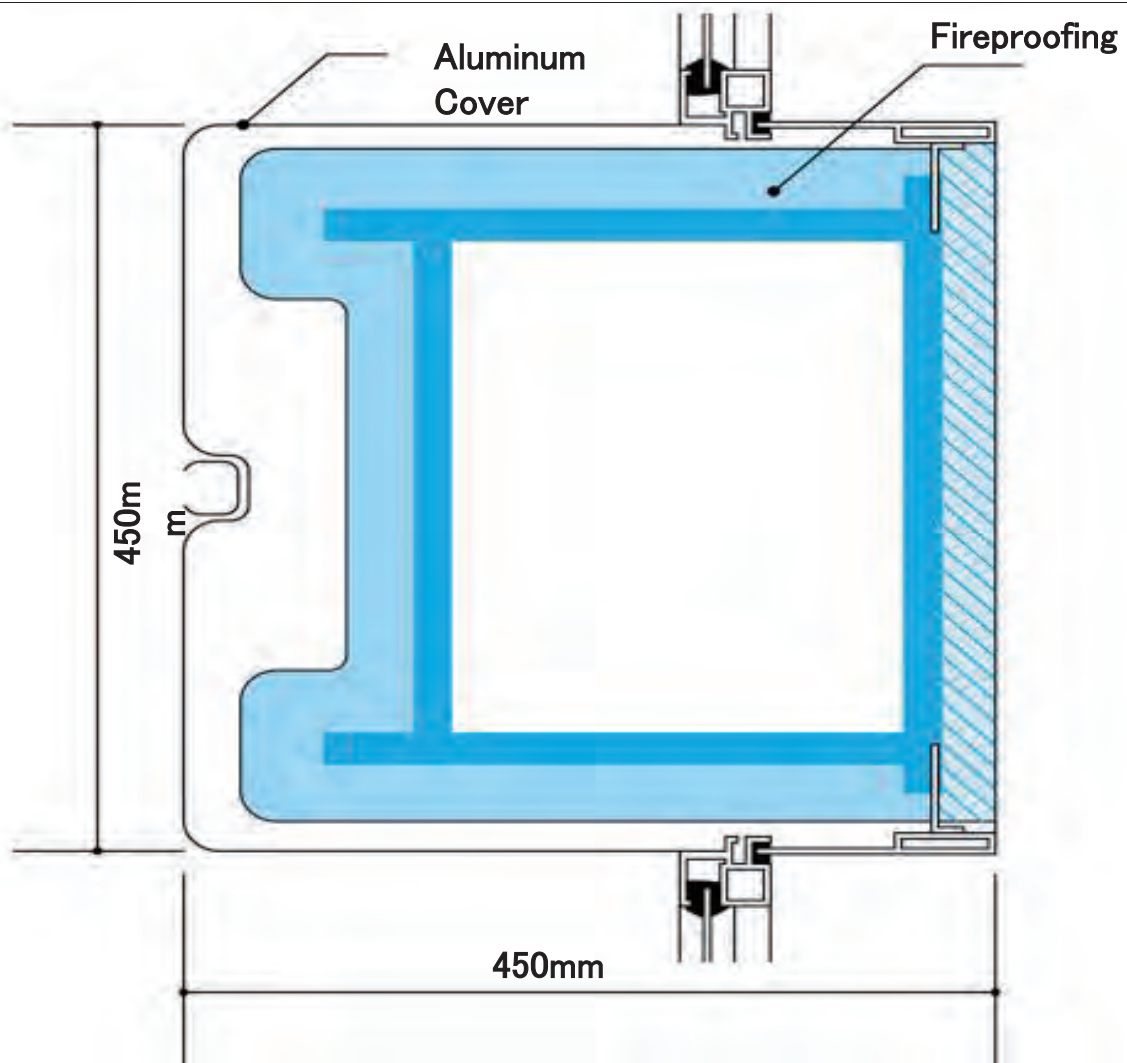
外周柱の加工手順



外周柱の加工手順

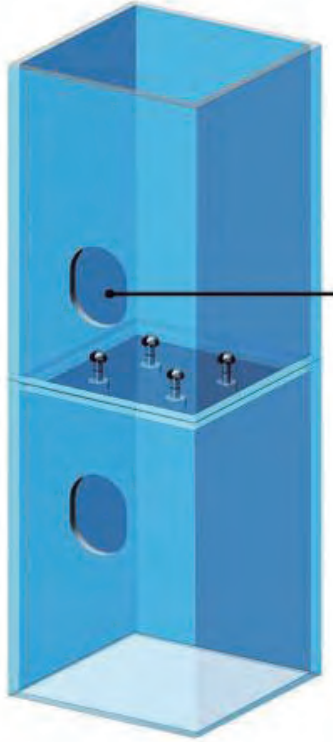


外周柱の加工手順





Column Splice



Access Hole

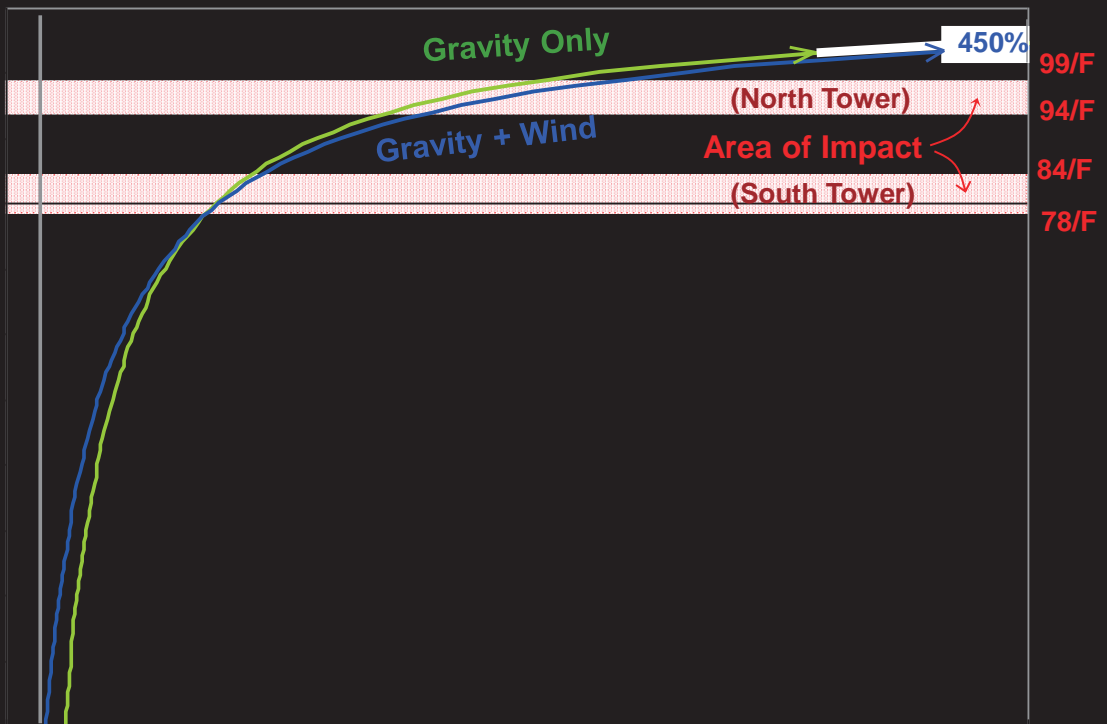
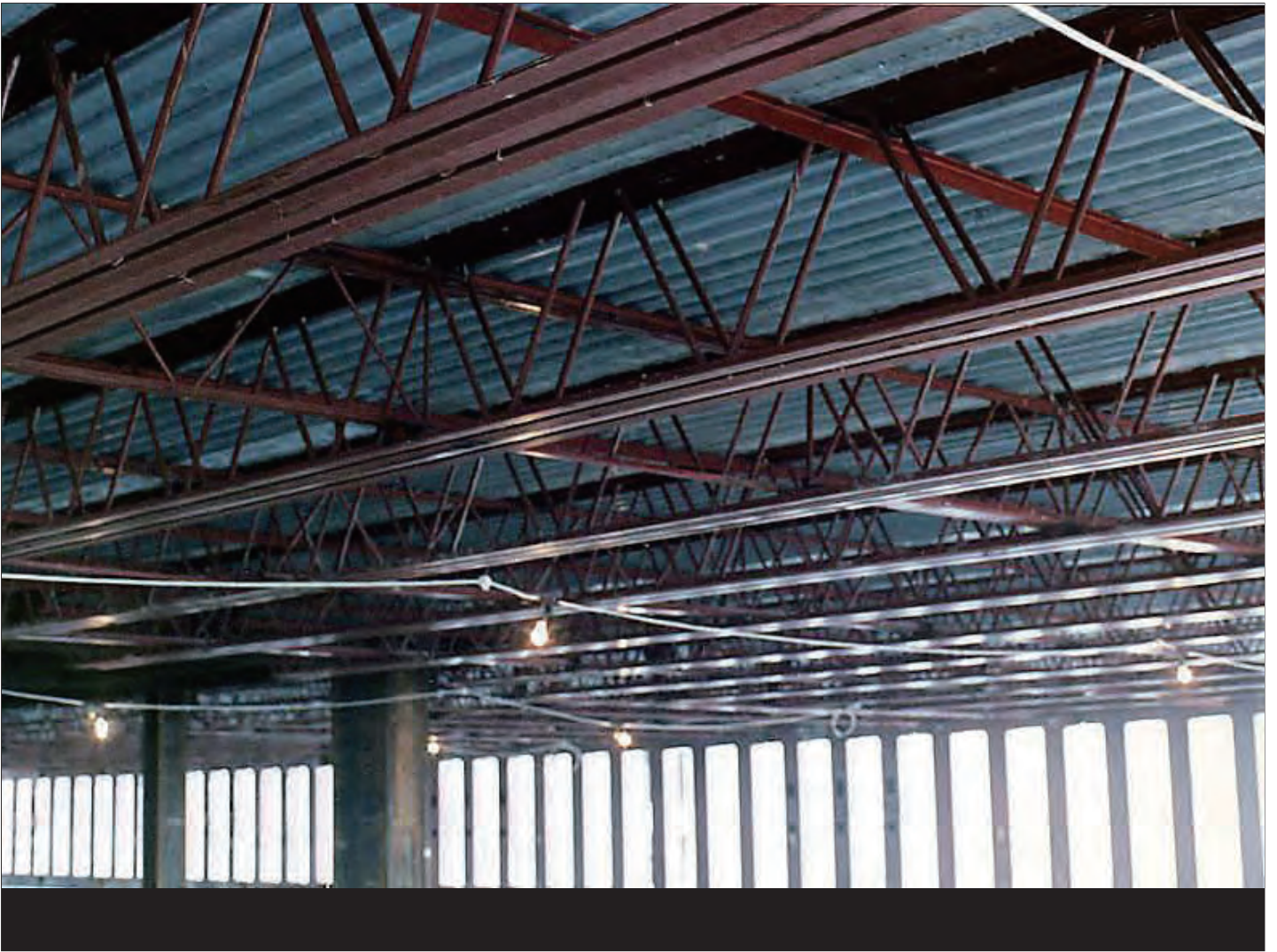


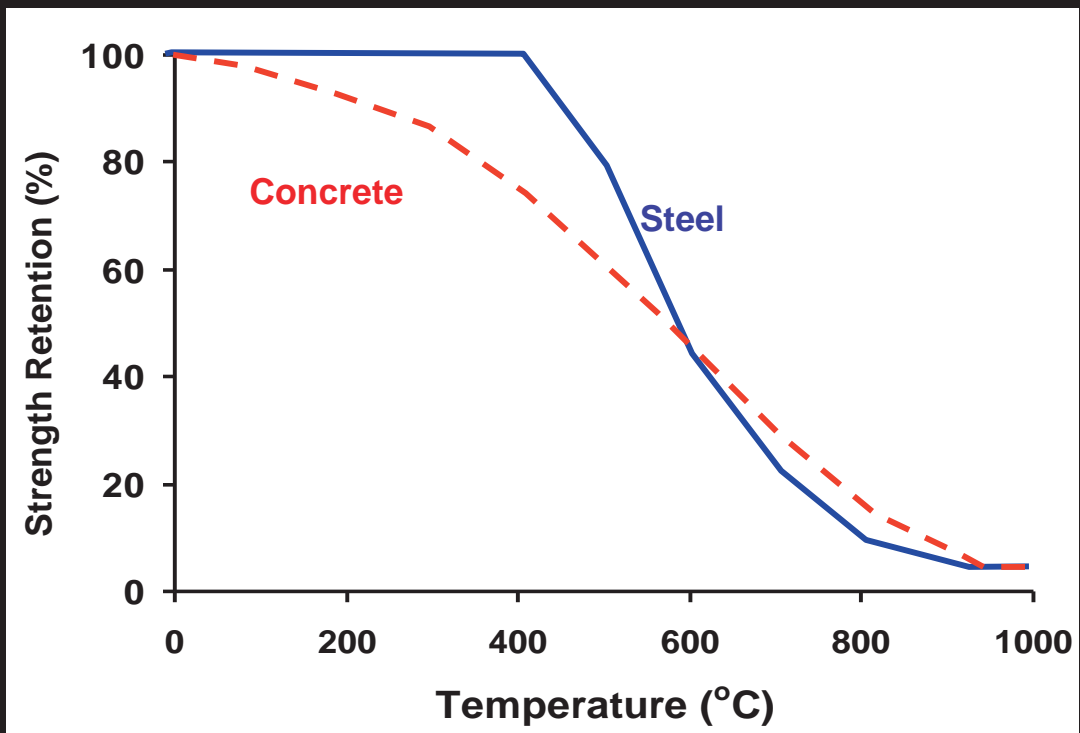
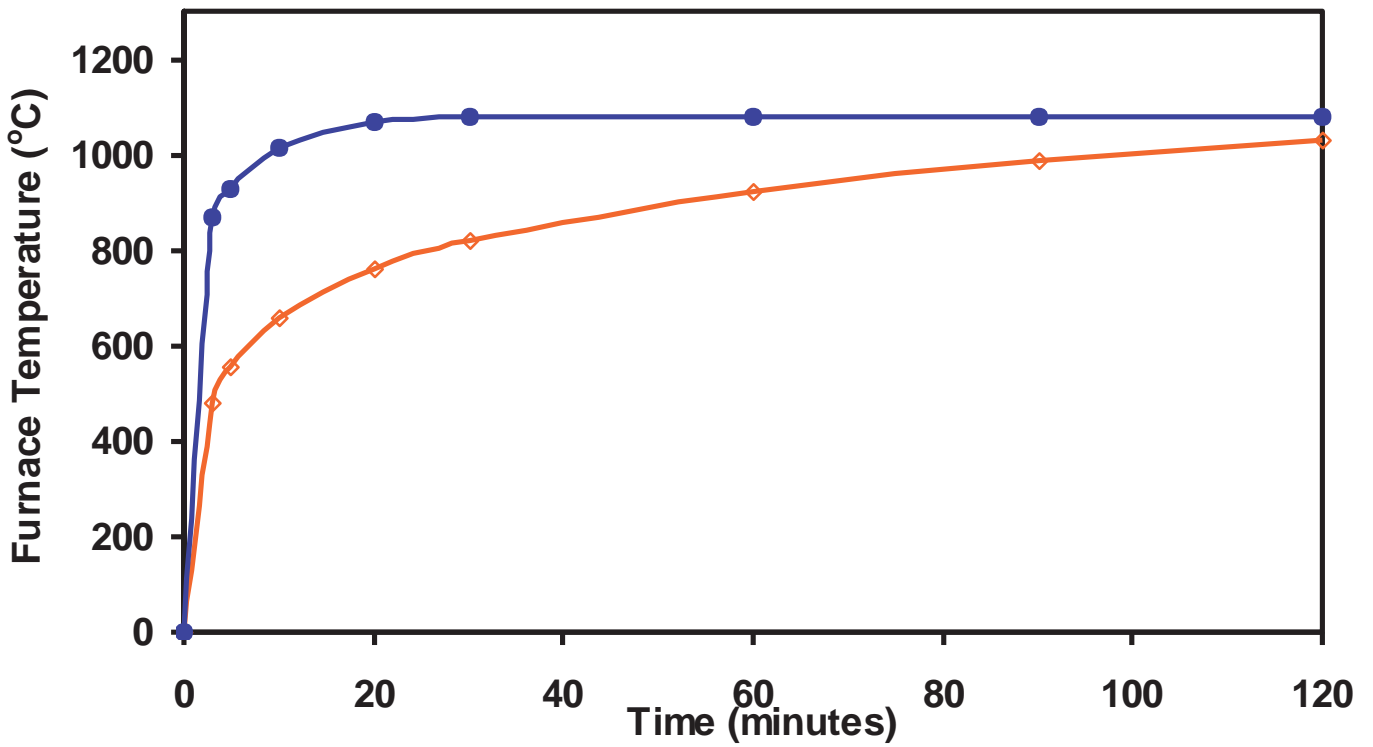
外周柱の継手



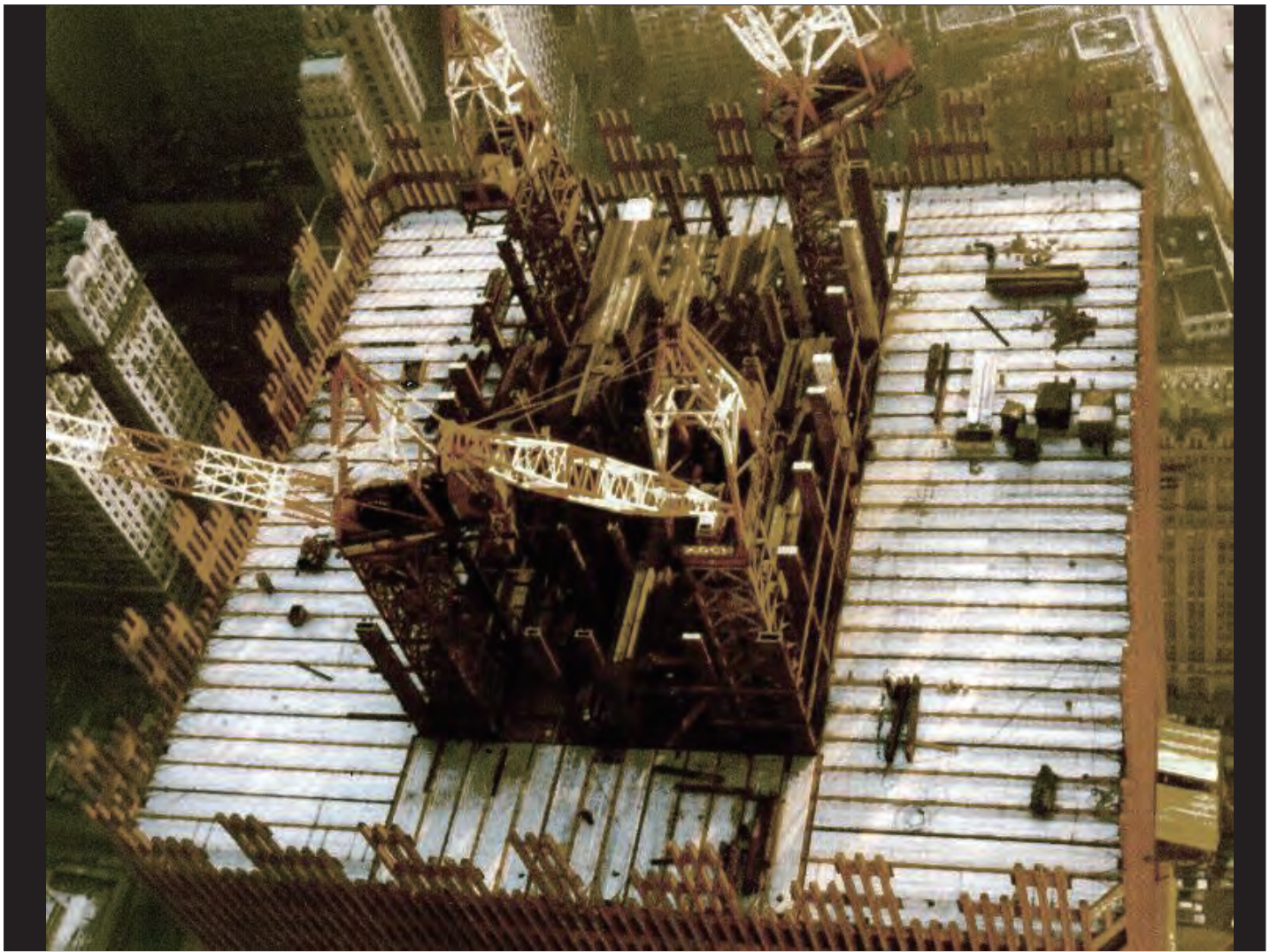


WTC最上部アンテナの土台



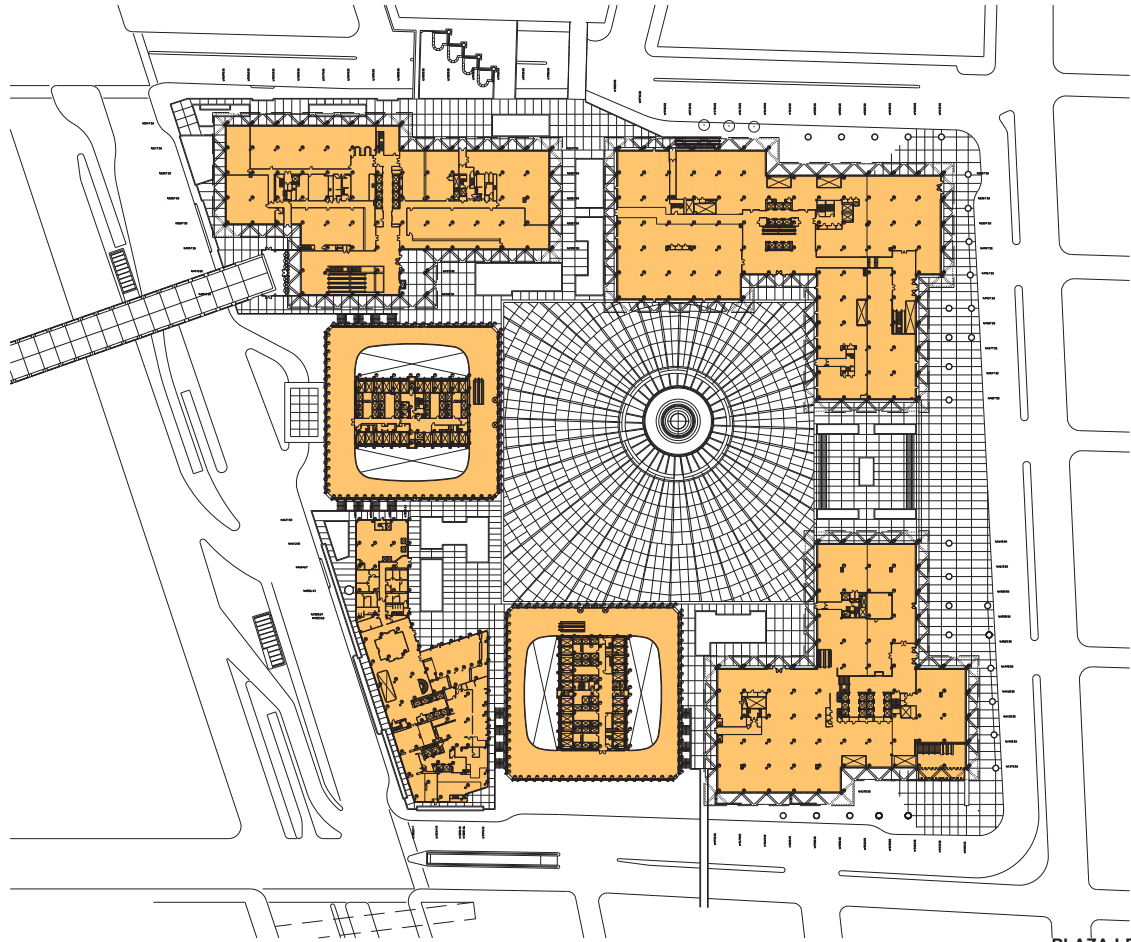


Strength vs Temperature for Concrete & Steel



(NY 17) NEW YORK, Aug. 7.--STUNTHAN WALKS BETWEEN TOWERS.--French professional stonibaw Philippe Petit carries a balance pole as he walks across a tightrope suspended between New York's World Trade Center twin towers early Wednesday. Petit, who had performed similar stunts in Paris and Australia, hung by his heels at one point and crossed the cable twice. Photographer Alan Weiner photographed the tightrope walker during his early-morning stroll between the city's highest structures. (AP WIREPHOTO)(aa41000av)1974(See AP AAA wire story)





PLAZA LEVEL
SCALE: 1"=150'



